

# 2011 REPORT ON THE IMPLEMENTATION OF P.A. 295 UTILITY ENERGY OPTIMIZATION PROGRAMS

---

John D. Quackenbush, Chairman  
Orjiakor N. Isiogu, Commissioner  
Greg R. White, Commissioner

MICHIGAN PUBLIC SERVICE COMMISSION  
DEPARTMENT OF LICENSING AND REGULATORY AFFAIRS

November 30, 2011



## Table of Contents

Introduction.....	1
Program Offerings and Implementation Dates by Utility.....	2
Energy Savings Targets .....	3
EO Surcharges and Program Funding.....	5
Avoided Cost .....	6
Efficiency United: State Selected Administrator .....	7
Low-Income Programs.....	9
Self-directed EO Program.....	10
Financial Incentive Mechanism .....	11
Revenue Decoupling .....	12
Michigan Saves Grant Program .....	13
MPSC Energy Optimization Collaborative .....	13
Conclusion .....	14

### Appendices

A-1: 2011 EO Plan Filings: Companies, Case Number, Plan Status .....	1
A-2: 2009-2011 Michigan EO Programs (65).....	2
B: EO Program Offerings by Utility.....	3
C-1: Energy Optimization MWh Targets.....	9
C-2: MCf Targets for Gas Companies .....	10
D-1: EO Surcharges by Company.....	11
D-2: Residential EO Surcharges and Average Monthly Total .....	14
D-3: Energy Optimization Program Spending .....	15
E-1: Commission Selected Administrator - Efficiency United – Funding and Energy Savings Targets 2009-2011.....	16
E-2: Commission Selected Administrator - Efficiency United – Funding and Energy Savings Targets 2012-2013.....	17
F-1: Energy Optimization Program Incentive Mechanism.....	18
F-2: Energy Optimization as a Percent of Program Spending.....	19
F-3: More Information on the Financial Incentive Mechanism .....	20
G: Energy Optimization Collaborative Workgroup Structure .....	21

# Introduction

## Report Criteria

In October 2008, Public Act 295 of 2008 (PA 295 or the Act) was signed into law.

Section 95(2)(e) of the Act requires that by November 30, 2009, and each year thereafter, the Michigan Public Service Commission (MPSC or Commission) is to submit to the standing committees of the Senate and House of Representatives with primary responsibility for energy and environmental issues a report on the Commission's effort to implement energy conservation and energy efficiency programs or measures. The report may include any recommendations of the Commission for energy conservation legislation.

## Background: PA 295 Requirements, Energy Optimization Plans, and Commission Implementation

Subpart B of PA 295 requires providers of electric or natural gas service to establish Energy Optimization (EO) programs for their customers.<sup>1</sup> Annual energy savings targets for providers are specified in the Act, ramping up to one percent of annual retail sales for electric providers and 0.75 percent of annual retail sales for natural gas providers in 2012. Providers are required to file plans with the Commission detailing the programs they will utilize to meet their annual energy savings goals. Regulated providers are allowed to fund their programs through Commission-approved EO surcharges, but must demonstrate that the program costs are reasonable and prudent and that they are cost-effective according to a standardized cost-benefit analysis specified in the Act.

In compliance with PA 295, on December 4, 2008, the Commission issued a temporary order in MPSC Case No. U-15800 to begin to implement the provisions of the Act. The temporary order provided EO plan filing guidelines and resolved implementation issues for EO and renewable energy

---

<sup>1</sup> Energy providers subject to the provisions of the Act exclude alternative electric suppliers and natural gas marketers, since retail choice customers may participate in their local distribution utility programs.

plans. EO plan submittals were required from all gas and electric utilities in Michigan. In 2010, the Commission approved Energy Optimization plans for 15 investor-owned utilities (IOUs), 10 electric cooperatives, and 41 municipal electric utilities, for a total of 66 Energy Optimization Plans. In 2011 there were 14 IOUs, 10 electric cooperatives, and 41 municipal electric utilities that filed EO plans, for a total of 65 Energy Optimization Plans. In 2011 there was one less IOU because Cloverland Electric Cooperative bought Edison Sault Electric Company. A listing of case numbers, company names, and current plan status can be found in *Appendix A-1*.

For the 2012 through 2015 plans, 53 of the 65 utilities in Michigan are formally coordinating the design and implementation of their EO programs in order to reduce administrative costs, create consistency among programs, and to improve customer and contractor understanding of program offerings and administrative procedures. The remaining 12 utilities are independently administering their own programs. A chart delineating these EO joint coordination groups, and their respective utility partners, can be found in *Appendix A-2*.

## Program Offerings

Beginning November 30, 2009, all natural gas and electric utility customers in Michigan were able to participate in specific energy efficiency programs offered by their local utility. New programs became available in 2010 and 2011 and utilities will continue to phase in the implementation of additional programs and expand existing programs over the next several years. In general, individual programs are divided into two broad categories: residential and commercial/industrial. Residential programs consist of five categories: lighting (compact fluorescent), heating ventilating and air conditioning (HVAC), weatherization, energy education, and pilot programs. Commercial/industrial programs consist of prescriptive and custom incentive programs, energy education, and pilot programs. Prescriptive programs provide rebates for specific equipment replacement such as lighting, boilers,

pumps, compressors, etc. Custom programs generally provide a rebate per kilowatt hours (kWh) electricity savings or per million cubic feet (Mcf) natural gas savings for a comprehensive system or industrial process improvement.

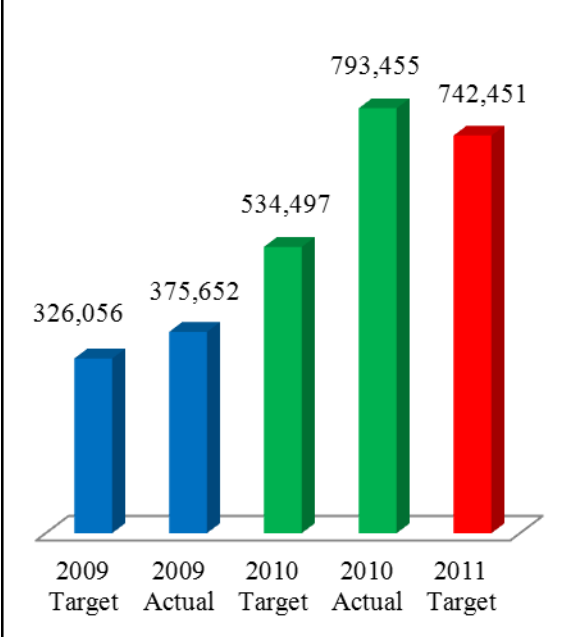
Specific program offerings for years 2009-2011 and implementation dates listed by utility can be found in *Appendix B*.

## Energy Savings Targets

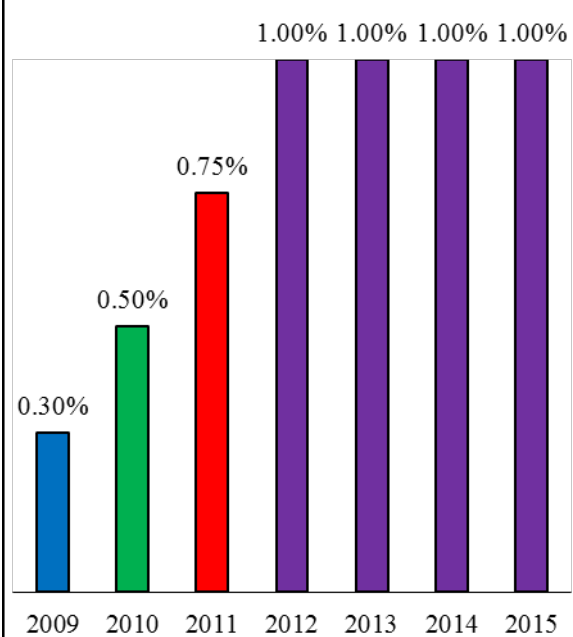
Section 77 of PA 295 provides annual energy savings targets that electric and natural gas utilities are required to meet. The minimum savings targets are based upon a percentage of calendar-year retail sales for each utility. These energy savings targets progressively increase over a four-year period from 2009-12 before leveling off in future years.

In 2010, EO program savings achieved for electric utilities were 148 percent of the target of 0.50 percent of retail sales as set forth in Section 77 of the Act. In 2010, the electric IOUs achieved 153 percent of their savings targets, while the municipal electric utilities reached 113 percent of their savings targets and the electric cooperatives met 110 percent of their targets. Ninety-one percent of the total statewide electric savings targets were achieved by regulated IOUs, while three percent of the total was met by electric cooperatives and the remaining six percent by municipal electric utilities. For 2011, the statewide PA 295 electric target of 0.75 percent of sales is projected to be 742,451 Megawatt hours (MWh). *Figure 1* shows electric savings targets for 2009 – 2011 and *Figure 2* describes the multiplier for determining yearly electric savings.

**Figure 1:**  
State of Michigan  
EO Electric Targets By Year  
(MWh)

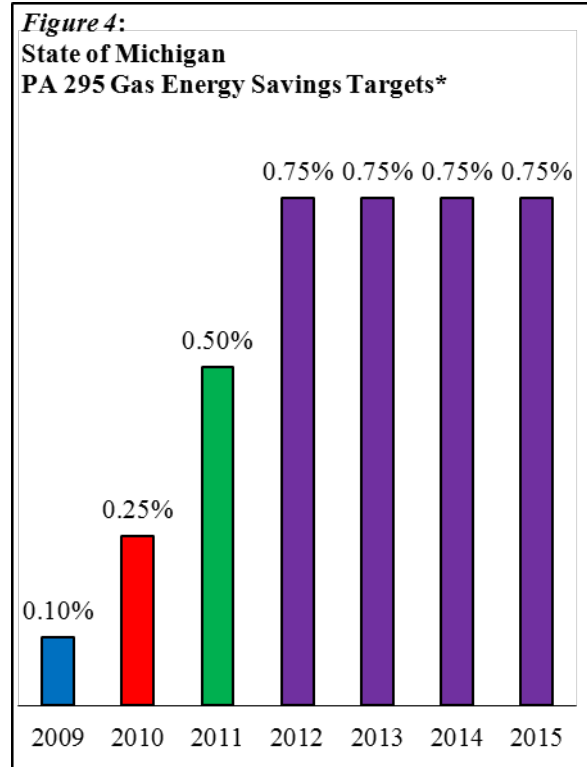
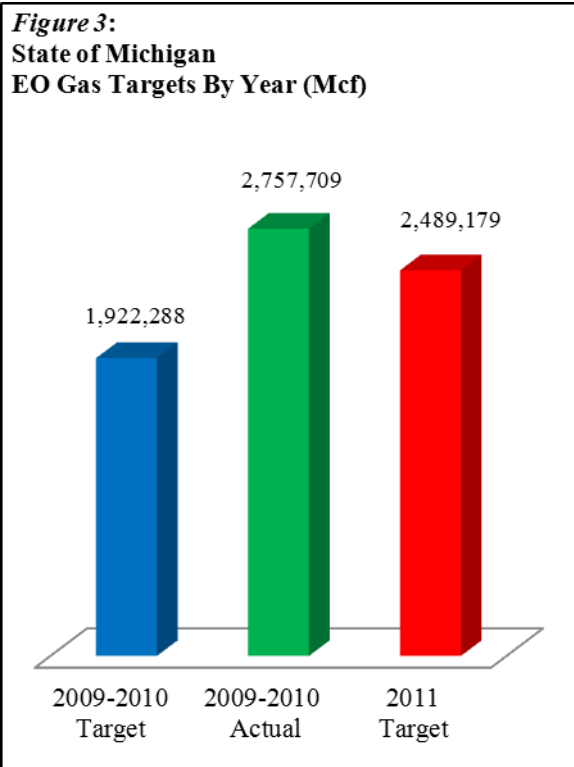


**Figure 2:**  
State of Michigan  
PA 295 Electric Energy Savings  
Targets\*



\*Note: Electric energy savings targets for each year are calculated by multiplying the prior year sales by the percentage in the above chart for that year.

The 2010 EO program savings achieved for natural gas utilities were 143 percent of the target as set forth in Section 77 of the Act. Consumers Energy gas division achieved 126 percent of its savings target and Michigan Consolidated Gas Company (MichCon) achieved 196 percent of its savings target. The remaining gas companies cumulatively achieved 123 percent of their savings target. For 2011, the statewide PA 295 gas target of 0.50 percent of sales is projected to be 2,489,179 Mcf. *Figure 3* shows gas savings targets for 2009 – 2011 and *Figure 4* describes the multiplier for determining yearly gas savings targets.



\*Note: Gas energy savings targets for each year are calculated by multiplying the prior year retail sales by the percentage in the above chart for that year.

For a detailed spreadsheet of energy savings target information by utility please *see Appendix C-1 and C-2*.

## EO Surcharges and Program Funding

Section 71 of PA 295 requires utilities that file Energy Optimization plans with the Commission to specify necessary funding levels for the activities being proposed. Commission-regulated utilities are able to cover their EO program expenses through a customer surcharge approved by the Commission. Under Section 89, surcharges adopted by the Commission are assessed on an energy usage basis for natural gas and residential electric customers. Commercial and industrial electric customers are assessed a fixed charge.

Section 73 of PA 295 requires the Commission to ensure that costs being recovered through surcharges are reasonable and prudent, and that the programs are cost-effective as

demonstrated by a Utility System Resource Cost Test (USRCT) specified in Section 13 of the Act. For additional detail on surcharges for all customer classes and estimates of typical residential surcharges, *see Appendix D-1 and D-2*.

Aggregate statewide funding for Energy Optimization programs in calendar year 2009 was \$67,030,258. For calendar year 2010, the statewide funding for Energy Optimization programs was \$135,369,598. For calendar year 2011, the statewide EO budget is expected to be \$208,141,474. For detailed spending information by utility please *see Appendix D-3*.

## Avoided Costs

In 2010, EO program expenditures of \$113 million by the largest combined gas and electric utilities in the state resulted in lifecycle savings to customers of \$554 million.<sup>2</sup> This means that for every dollar spent on EO programs in 2010 customers should realize benefits of \$4.88. The benefits will flow through to customers over the mean lifecycle of all efficiency projects implemented by customers during the program year.<sup>3</sup> The benefits are in the form of utility avoided costs for production of electricity, or purchase of natural gas, which would otherwise be recovered in utility rates. Over the five-year period from 2011-2015, the cumulative benefits to customers are expected to be in excess of \$2.5 billion.

The calculation of avoided costs is based upon the ratio of benefits to program costs known as the USRCT. This is a nationally recognized standard of economic measurement that PA 295 requires to be reported by EO providers, and is based upon input data that is reviewed and certified by an independent third-party evaluation contractor.

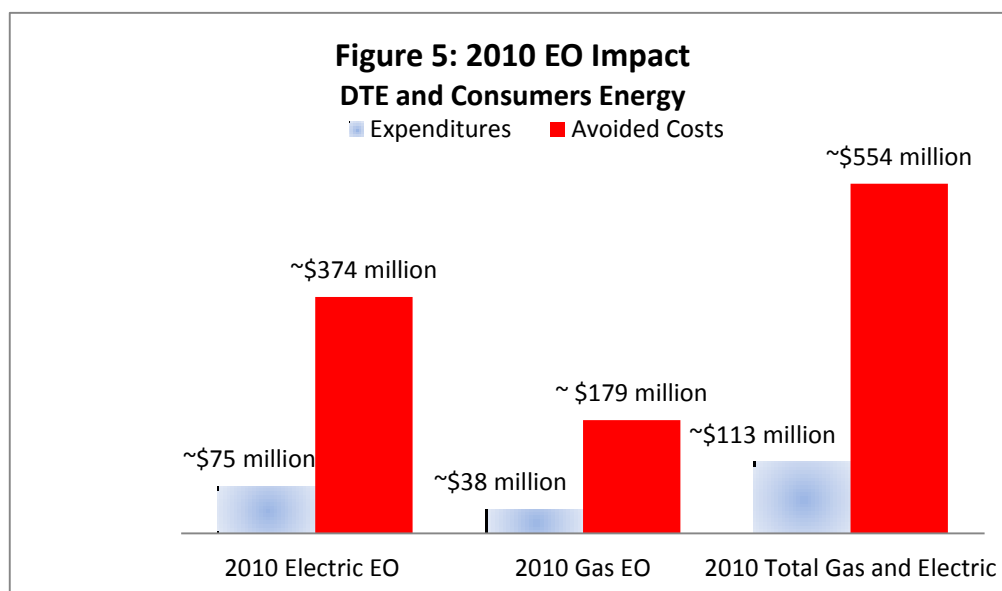
---

<sup>2</sup> This data was provided by DTE Energy (Detroit Edison and MichCon) and Consumers Energy gas and electric, which represent approximately 90 percent of utility customers in Michigan.

<sup>3</sup> For program year 2010, the mean lifecycle was calculated to be 9.6 years.



The EO program will result in the retention of hundreds of millions of dollars in fuel costs that would have been exported to other states in order to import energy to Michigan. Keeping these dollars in state helps to create jobs for the installation of energy efficiency measures by skilled contractors, energy efficiency audits, product sales, and other associated work. In addition, the benefits flowing to Michigan utility customers via the EO program should help minimize the debt burden of consumers, reduce utility uncollectible expenses, and strengthen the competitive position of Michigan businesses. *Figure 5* below shows the avoided costs for EO investments for DTE Energy (Detroit Edison and MichCon) and Consumers Energy gas and electric.



## Efficiency United: State Selected Administrator

Section 91 of PA 295 created an option for electric and natural gas providers to offer energy optimization services through a program administrator selected by the Commission. Section 91(6) requires the administrator to be a “qualified nonprofit organization” selected through a competitive bid

process. To fund the program, which has been named Efficiency United, the administrator is paid directly by the participating providers using funds collected from customers.

The Michigan Community Action Agency Association (MCAAA) was awarded the Efficiency United contract on August 10, 2009, following the required bid process. MCAAA is a membership organization of 30 local community action agencies covering the entire state of Michigan and has extensive experience in the provision of energy efficiency services. MCAAA is working in cooperation with its primary implementation contractor, CLEAResult Consulting Great Lakes, and other subcontractors in the design, implementation, and administration of PA 295 energy optimization programs. The contract period is through December 31, 2011, with up to four optional, one-year extensions. The Commission expects the contract to be extended for the 2012 program year and future extensions will continue to be at its discretion.

Efficiency United (EU) energy optimization programs were launched for customers of participating providers in December 2009. Services and offerings are similar to, and coordinated with, those of other providers. Although EU program services are not subject to the PA 295 statutory energy savings targets, equivalent contractual targets were imposed by the Commission. Since the EU programs did not begin until the end of 2009, the first meaningful annual energy savings results are for the combined 2009/2010 program years: 63,810 MWh of electricity and 309,609 Mcf of natural gas.<sup>4</sup> Actual savings reported were 66,373 MWh and 380,331 Mcf, or 104 percent and 123 percent of the targets, respectively. Target energy savings for 2011 are 59,171 MWh of electricity and 442,455 Mcf of natural gas. Annual EU utility program budgets range from approximately \$700 to \$3,000,000 for the electric providers and from approximately \$100,000 to \$6,000,000 for the natural gas providers. The total budget for

---

<sup>4</sup> 24,362 MWh (2009 electric target) + 39,448 MWh (2010 electric target) = 63,810 MWh;  
88,382 Mcf (2009 gas target) + 221,227 Mcf (2010 gas target) = 309,609 Mcf

Efficiency United from the contract award date in 2009 through December 2011 is \$34,669,263.

Detailed information on participating utilities, funding, and energy savings targets can be found in *Appendix E-1 and E-2*.

## Low-Income Programs

Sections 71, 89, and 93 of PA 295 require utilities to offer EO programs for each customer class, including low-income residential. Each rate class must contribute proportionally to low-income program costs, based on its funding of the utility's total EO program. Low-income EO programs are excluded from the requirement to meet the cost-benefit test. *Figure 6* and *Table 1* below show the contribution to low-income program costs by Michigan utilities in 2009-11.

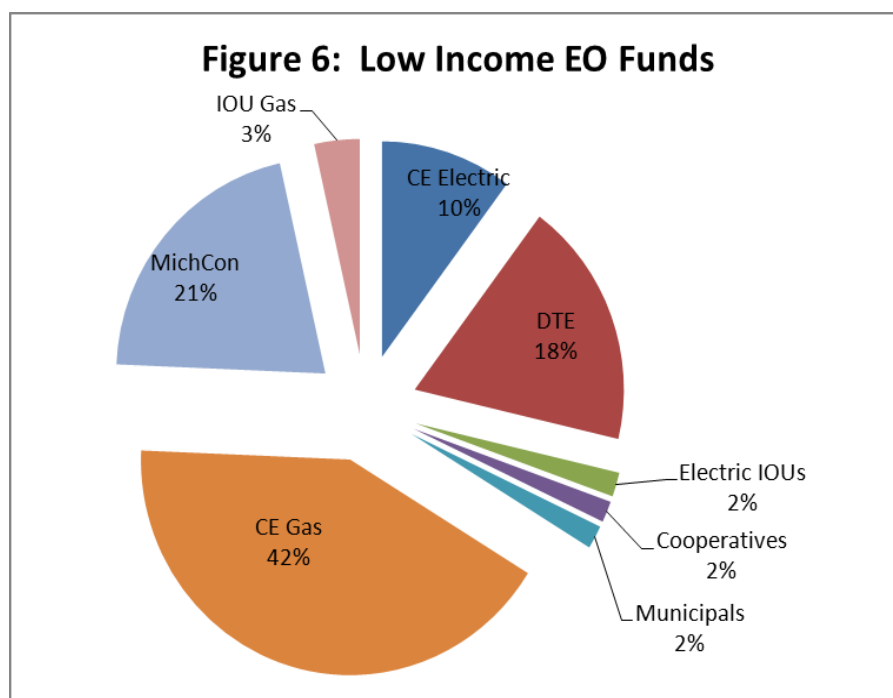


Table 1: Low Income EO Fund Contributions	
CE Electric	\$5,918,889
DTE	\$10,761,250
Electric IOUs	\$1,056,804
Cooperatives	\$921,044
Municipals	1,017,871
CE Gas	24,335,558
MichCon	\$12,110,000
IOU Gas	2,037,124
Total	\$58,158,540

## Self-Directed EO Program

Under Section 93 of PA 295, electric customers that meet certain eligibility requirements may create and implement a customized EO plan and thus be exempt from paying an EO surcharge to their utility providers. Electric customer eligibility to participate in the self-directed EO plans is determined by the customer's annual peak demand. For 2012, the Act allows customers with 1 MW annual peak demand in the preceding year, or 5 MW aggregate at all of the customer's sites within a service provider's territory, to participate. These are the same thresholds as 2011, but lower than the 2010 thresholds of 2 MW annual peak demand or 10 MW in aggregate. The number of customers enrolled to self-direct their own EO program has dropped from 77 in 2009 to 47 in 2011.

Reported and projected energy savings for these large commercial and industrial customers are summarized in *Table 2* below.

*Table 2:* Projected Energy Savings for Large Commercial and Industrial Customers

Provider	2009 Customers	2010 Customers	2011 Customers	2009 reported load reduction (MWh)	2010 reported load reduction (MWh)	2011 expected load reduction (MWh)
Detroit Edison	26	26	13	12,486	18,488	7,834
Consumers	30	30	16	8,515	12,343	5,648
State Administrator	9	11	10	5,196	14,568	21,476
Cooperative	3	3	4	899	1,498	562
Municipal	9	9	4	2,006	3,343	606
Total	77	79	47	29,102	50,240	36,126

Per PA 295, self-directed customers with less than 2 MW annual peak demand per site or 10 MW in aggregate must utilize an approved energy optimization service company (EOSC) to design and implement their EO programs. Following a public hearing, in 2010 the Commission

enacted an approval process, required by PA 295, for EOSCs. The approval process and application can be found on the Commission's website.

## Financial Incentive Mechanism

Section 75 of PA 295 allows the Commission to authorize a financial incentive mechanism for providers that exceed the energy savings targets in a given year. On September 29, 2009, the Commission authorized a financial incentive mechanism for Detroit Edison (U-15806), MichCon (U-15890) and Consumers Energy (U-15805 & U-15889) that it believed would incent utilities to pursue cost effective energy efficiency programs that significantly exceed the statutory minimum targets. The incentive mechanism requires a utility to simultaneously meet two thresholds: exceed the statutory minimum targets, and exceed the USRCT benefit-cost test. The incentive payout is computed as a percent of program spending, and is a linear interpolation between the minimums and maximum achievement level of 115 percent of the energy savings target and a USRCT of 1.25. The maximum incentive is capped at 15 percent of program spending. For 2009, Consumers Energy, Detroit Edison, and MichCon were all approved to receive financial incentive payments which were collected, with no interest included, over a 12 month period. For 2010, Consumers Energy, Detroit Edison and MichCon requested an incentive amount for exceeding their minimum targets and exceeding the USRCT. The specific amounts are listed in *Table 3* below:

*Table 3: Financial Incentives*

Utility:	2009 Actual Incentive:	2010 Requested Incentive:
Consumers Energy (Electric)	\$3,323,612	\$5,076,731
Consumers Energy (Gas)	\$2,361,693	\$3,407,064
Detroit Edison	\$3,008,829	\$6,200,000
Michigan Consolidated Gas	\$913,374	\$2,400,000

For more detailed information, including the financial incentive mechanism nomograph, *see Appendix F-1 – F-3.*

## Revenue Decoupling

Section 89(6) of PA 295 requires the Commission to establish revenue decoupling mechanisms (RDMs) for regulated gas utilities that implement an Energy Optimization program and that request such a mechanism. A gas utility must file a request for an RDM, although the Commission may authorize an alternative mechanism that it deems to be in the public interest.

Section 97(4) of PA 295 required the Commission to issue a report to the Legislature no later than one year after the effective date of the Act on the potential impacts on all classes of customers if the electric providers whose rates are regulated by the Commission decouple rates. The Commission filed its report with the Legislature on October 6, 2009, finding that electric utility RDMs would be cost effective and would reduce the use of fossil fuels in the state. The Commission determined that it had the ability to approve electric utility RDMs under its general ratemaking authority, and that it would consider electric utility RDMs for any utility that requested one.

On and after November 2, 2009, the Commission approved revenue decoupling mechanisms for seven utilities. Of the approved mechanisms, four are electric utility RDMs: Consumers Energy (Electric), Detroit Edison, Upper Peninsula Power, and Indiana Michigan Power Company. Three RDMs are for gas utilities: Consumers Energy (Gas), Michigan Consolidated Gas, and Michigan Gas Utilities. All RDMs were approved on a pilot basis. Several different mechanisms were approved to obtain experience and information that would enable the Commission to refine the algorithms, annual reconciliation calculation, revenue allocations, and surcharge rate design.

## Michigan Saves Grant Program

Michigan Saves was established in June 2009 by a grant from the Low Income and Energy Efficiency Fund administered by the Commission. This grant, awarded to Public Sector Consultants and the Delta Institute, sought to establish a new organization to design and launch an innovative financing program for energy efficiency and small-scale renewable energy technologies. This was a two-year grant which expired on September 30, 2011. During the grant period, Public Sector Consultants accomplished the grant objectives, primarily by incorporating Michigan Saves, Inc., a non-profit energy efficiency financing program for residential and commercial customers.

In 2011, Michigan Saves was able to offer the Home Energy Loan Program throughout the entire state, establish the Michigan Saves Commercial Energy Loan Program, execute the Michigan Saves Home Energy Mortgage Program, and negotiate with lenders to increase loan caps up to \$20,000. Michigan Saves has closed out its grant and transferred to independent nonprofit status.

Statistics in *Table 4* below show project activity through July 2011:

*Table 4: Michigan Saves Project Activity through July 2011*

Loans Approved	402
Loan Approval Rate	56%
Loans Closed	168
Average Loan Size Approved	\$7,398
Average Credit Score Approved	747
Authorized Contractors State-wide	210
Total Loan Value Issues	\$1,143,341
Average Electric Savings*	808kWh/year
Average Natural Gas Savings*	230 CCf/year
Average Utility Bill Savings*	\$389/year

\*Whole Home Projects Only

## MPSC Energy Optimization Collaborative

In Case Nos. U-15805 and U-15806, the Commission directed the Commission Staff to establish a statewide energy optimization collaborative which required the participation of all gas and electric

providers and offered the opportunity for a variety of additional stakeholders to participate. The structure and goals of the EO collaborative were outlined in the Commission's 2009 report to the Legislature. A key goal reached by the collaborative was the reduction of the extent and cost of the formal contested hearing process through stakeholder consensus and industry peer review of standards and procedures. Program Design and Implementation and Program Evaluation workgroups continued to meet throughout 2011 and the Low-Income Workgroup collaborated with the Coalition to Keep Michigan Warm. These workgroups report to the Collaborative Steering Committee as needed.

Participation in the Steering Committee is by invitation only and includes stakeholders representing gas and electric providers, interveners in EO plan cases, energy efficiency advocates, and others. In early 2011, the Program Design and Implementation and Program Evaluation workgroups decided that the Steering Committee would be most effective in meeting once a year at year end to discuss any issues that remained outstanding from the other workgroups. The 2011 Steering Committee meeting is planned for December 2011. A flow chart of the EO Collaborative workgroup structure is located in *Appendix G*.

## Conclusion

The Commission continues to view the Energy Optimization provisions of PA 295 as essential to Michigan's overall energy policy. The Commission believes that EO programs are a critically important component of efforts to improve the state's economy, and is confident that the state's EO programs will continue to improve the competitive position of Michigan businesses and the financial standing of its residents.

Data collected by Commission Staff shows that the state's largest utilities are significantly exceeding energy savings targets, while the majority of smaller utilities are meeting or exceeding targets. The Commission recognizes that the statutory targets will require more



effort on the part of providers to meet as these targets continue to ramp up in future years. In fact, several smaller providers have expressed concern about their ability to achieve these savings targets going forward. To that end, the Commission has used its administrative authority under PA 295 to provide more flexibility to utilities in meeting their savings goals.

Most notably, on November 10, 2011, in Case No. U-16678, the Commission approved a settlement agreement with the state's electric cooperatives and municipal utilities that collaboratively administer their EO programs through the Michigan Electric Cooperative Association (MECA). In its order approving the settlement agreement, the Commission noted that it was exercising its discretion pursuant to Section 71(3)(h) of PA 295 to allow utilities flexibility in designing their EO programs. Several administrative improvements, including allowing the collaborative to be treated as one provider for purposes of achieving savings targets, allowing EO dollars to flow to the most successful program offerings, and recognizing the potential of unlimited carry-forward of EO savings for self-directed customers, were approved. These changes have broad applicability, and could be useful to other utilities that jointly coordinate EO programming.

In addition to the MECA collaborative model, the Commission is exploring several innovative programs that could help utilities in meeting their energy savings targets, including an enhanced power-factor program, recognition of the value of peak demand reductions associated with energy saving measures, and an alternate EO program for large gas transportation customers which cannot benefit from the traditional rebate/incentive program.

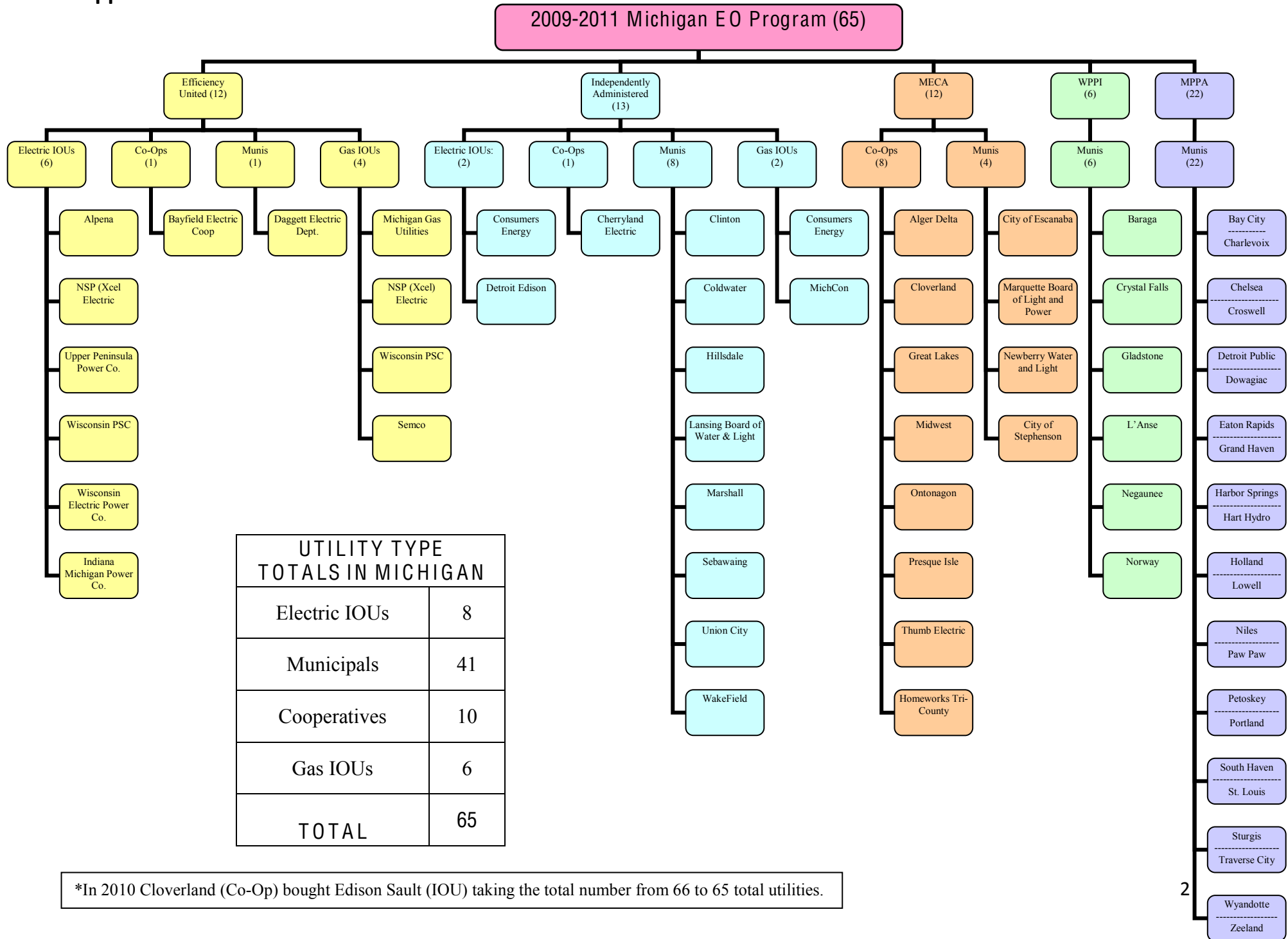
The Commission believes that the goals set by the Legislature to achieve energy savings are valuable and that the state's EO programs will continue to positively benefit residential and business customers of Michigan's utilities. To the extent that there is a desire to provide

additional flexibility to providers in meeting energy savings targets and this ability is not within the Commission's authority, the Commission stands ready to assist the Legislature and stakeholders in finding solutions that provide for the most efficient use of customer dollars going to EO programs and reduction of administrative burden for providers while still meeting the broader energy optimization goals of Public Act 295.

# Appendix A-1

2011 EO Plan Filings			
	COMPANY	2011 Plan Case #	Plan Status
	<b>IOUs</b>		
1	Alpena Power Company	U-16669	Order Approving Settlement 9/13/2011
2	Consumers Energy Company	U-16670	Filed EO Plan on 8/1/2011
3	Detroit Edison Company	U-16671	Filed EO Plan on 9/1/2011
4	Indiana Michigan Power Company	U-16673	Filed EO Plan on 8/1/2011
5	Northern States Power Company-Wisconsin	U-16674	Order Approving Settlement 9/13/2011
6	Upper Peninsula Power Company	U-16675	Order Approving Settlement 9/13/2011
7	Wisconsin Public Service Corporation	U-16676	Settlement agreement on 8/18/2011 Awaiting Order
8	Wisconsin Electric Power Company **	U-16677	Order Approving Settlement 9/13/2011
	<b>Co-ops</b>		
9	Alger Delta Cooperative Electric Association	U-16678	Order Approving Settlement 10/17/2011
10	Bayfield Electric Cooperative	U-16679	No Plan Filed / Efficiency United/Member Regulated
11	Cherryland Electric Cooperative	U-16680	Filed Plan on 7/29/2011 / Member Regulated
12	Cloverland Electric Cooperative	U-16681	Order Approving Settlement 10/17/2011
13	Great Lakes Energy Cooperative	U-16682	Order Approving Settlement 10/17/2011
14	Midwest Energy Cooperative	U-16683	Order Approving Settlement 10/17/2011
15	Ontonagon Co. Rural Electrification Assoc.	U-16684	Order Approving Settlement 10/17/2011
16	Presque Isle Electric and Gas Co-op	U-16685	Order Approving Settlement 10/17/2011
17	Thumb Electric Cooperative	U-16686	Order Approving Settlement 10/17/2011
18	Tri-County Electric Cooperative	U-16687	Settlement agreement on 10/17/2011 Awaiting Order
	<b>Municipals</b>		
19	Village of Baraga	U-16688	Filed App to join EU on 8/17/2011
20	City of Bay City	U-16689	Filed EO Plan on 8/31/2011 (2012-2015)
21	City of Charlevoix	U-16690	Filed EO Plan on 8/31/2011 (2012-2015)
22	Chelsea Department of Electric and Water	U-16691	Filed EO Plan on 8/31/2011 (2012-2015)
23	Village of Clinton	U-16692	Filed EO Plan on 9/22/2011 (2012-2015)
24	Coldwater Board of Public Utilities	U-16693	Filed EO Plan on 9/26/2011 (2012-2013)
25	Croswell Municipal Light & Power Department	U-16694	Filed EO Plan on 9/22/2011 (2012-2015)
26	City of Crystal Falls	U-16695	Filed App to join EU on 8/17/2011
27	Daggett Electric Department	U-16696	Filed App to join EU on 9/22/2011
28	Detroit Public Lighting Department	U-16697	Filed EO Plan on 8/31/2011 (2012-2015)
29	City of Dowagiac	U-16698	Filed EO Plan on 8/31/2011 (2012-2015)
30	City of Eaton Rapids	U-16699	Filed EO Plan on 8/31/2011 (2012-2015)
31	City of Escanaba	U-16700	Filed EO Plan on 8/17/2011 (2012-2015)
32	City of Gladstone	U-16701	Filed EO Plan on 8/17/2011 (2012-2015)
33	Grand Haven Board of Light and Power	U-16702	Filed EO Plan on 8/31/2011 (2012-2015)
34	City of Harbor Springs	U-16703	Filed EO Plan on 8/31/2011 (2012-2015)
35	City of Hart Hydro	U-16704	Filed EO Plan on 9/2/2011
36	Hillsdale Board of Public Utilities	U-16705	Filed EO Plan on 8/31/2011 (2012-2015)
37	Holland Board of Public Works	U-16706	Filed EO Plan on 8/17/2011 (2012-2015)
38	Village of L'Anse	U-16707	Filed EO Plan on 8/17/2011 (2012-2015)
39	Lansing Board of Water & Light	U-16708	Filed EO Plan on 8/29/2011 (2012-2014)
40	Lowell Light and Power	U-16709	Filed EO Plan on 9/1/2011 (2012-2015)
41	Marquette Board of Light and Power	U-16710	Filed EO Plan on 8/17/2011 (2012-2015)
42	Marshall Electric Department	U-16711	Filed EO Plan on 9/29/2011 (2012-2015)
43	Negaunee Department of Public Works	U-16712	Filed EO Plan on 8/17/2011 (2012-2015)
44	Newberry Water and Light Board	U-16713	Filed EO Plan on 8/17/2011 (2012-2015)
45	Niles Utility Department	U-16714	Filed EO Plan on 8/31/2011 (2012-2015)
46	City of Norway	U-16715	Filed EO Plan on 8/17/2011 (2012-2015)
47	City of Paw Paw	U-16716	3rd Motion to extend to 12/2/2011
48	City of Petoskey	U-16717	Filed EO Plan 8/24/2011 (2012-2015)
49	City of Portland	U-16718	Filed EO Plan on 8/31/2011 (2012-2015)
50	City of Sebewaing	U-16719	Filed EO Plan on 9/29/2011 (2012-2015)
51	City of South Haven	U-16720	Filed EO Plan on 8/31/2011 (2012-2015)
52	City of St. Louis	U-16721	Filed EO Plan on 9/1/2011 (2012-2015)
53	City of Stephenson	U-16722	Filed EO Plan on 8/17/2011 (2012-2015)
54	City of Sturgis	U-16723	Filed EO Plan on 8/31/2011 (2012-2015)
55	Traverse City Light & Power	U-16724	Filed EO Plan on 8/31/2011 (2012-2015)
56	Union City Electric Department	U-16725	Filed EO Plan on 10/27/2011 (2012-2015)
57	City of Wakefield	U-16726	Filed EO Plan on 10/19/2011 (2012-2015)
58	Wyandotte Department of Municipal Service	U-16727	Filed EO Plan on 8/31/2011 (2012-2015)
59	Zeeland Board of Public Works	U-16728	Filed EO Plan on 8/31/2011 (2012-2015)
	<b>Retail Rate-Regulated Natural Gas Providers</b>		
60	Consumers Energy Company(filing joint w/electric)	U-16670	Filed EO Plan on 8/1/2011
61	Michigan Consolidated Gas Company	U-16730	Filed EO Plan on 9/1/2011
62	Michigan Gas Utilities Corporation	U-16731	Order Approving Settlement 8/25/2011
63	Northern States Power Co-Wisc.(filing joint w/elec)	U-16674	Order Approving Settlement 9/13/2011
64	SEMCO Energy, Inc.	U-16733	Order Approving Settlement 8/25/2011
65	Wisconsin Public Serv. Corp.(filing jointly w/elec)	U-16676	Settlement agreement on 8/18/2011 Awaiting Order

## Appendix A-2



Appendix B

Utility	Sector		Program Type	Year Imp.	Implementation Contractors
INDEPENDENTLY ADMINISTERING					
IOUS					
Consumers	Residential	1	Appliance Recycling	2009	JACO Environmental
		2	Multifamily Direct Install	2009	ICF
		3	Income Qualified	2009	CLEAResult
		4	Energy Education	2009	National Energy Foundation
		5	Energy Star Lighting	2009	ICF
		6	Energy Star Appliances	2009	ICF
		7	HVAC & Water Heating	2009	ICF
		8	New Construction	2009	CLEAResult
		9	Existing Home Retrofit	2010	ICF
		10	Residential Pilots	2009	ICF
	C & I	1	Custom Business Solutions Program	2009	KEMA
		2	Comprehensive Business Solutions	2009	KEMA
		3	Small Business Direct Install	2009	KEMA
		4	Business Pilots	2009	KEMA
DTE	Residential	1	Energy Star	2009	ICF
		2	Audit & Weatherization	2009	CLEAResult and SEEL
		3	HVAC	2009	ICF
		4	Appliance Recycling	2009	JACO Environmental
		5	Multifamily Direct Install	2009	SEEL
		6	New Construction	2009	CLEAResult
		7	Education	2009	Internally
		8	Pilot Programs	2009	Internally
		9	Low Income	2009	CLEAResult
	C & I	1	Prescriptive	2009	KEMA
		2	Custom Business Solutions Program	2009	KEMA
		3	New Construction	2009	KEMA
		4	RFP	2009	KEMA
		5	Education	2009	Internally
		6	Pilot Programs	2009	Internally
		Co-Ops			
Cherryland	Residential	1	Residential Low Income	2009	Northwest Community Action Agency
		2	Efficient Lighting Program	2009	Internally
		3	Refrigerator/Freezer Turn-In/Recycle	2009	Internally
		4	HVAC - Water Heater Program	2009	Internally
		5	Residential Education Services	2009	Internally
		6	Residential Pre-Pay Program Pilot	2010	Internally
	C & I	1	Commercial and Industrial Prescriptive Incentive	2009	Internally
		2	Business Education Services	2009	Internally
Munis					
Clinton	Residential	1	Residential Low Income	2009	Administration and Implementation done by village of Clinton. Evaluation: Done by a local police officer
		2	Efficient Lighting	2009	
		3	Refrigerator/Freezer Recycling	2010	
		4	Efficient Appliances & HVAC	2010	
		5	Multifamily In-Unit Efficiency	2010	
		6	Educational Services	2009	
		7	Pilot/Emerging Technology	2010	
	C & I	1	Efficient Lighting	2009	
		2	Prescriptive Incentive Program	2010	
		3	Custom Incentive Program	2010	
Coldwater	Residential	4	Educational Services	2009	Overall administration and implementaion was done internally. Residential Low Income was done by City of Coldwater grant administration and Community Action Agency.
		5	Pilot/Emerging Technology	2010	
		1	Efficient Lighting	2009	
		2	Refrigerator/Freezer Recycling	2009	
		3	Education Services	2009	
		4	Residential Appliances and HVAC	2010	
		5	Electric Water Heating Kits	2010	
	6	Residential Pilot/Emerging Technology	2010		
	C & I	7	Residential Low Income	2009	
		1	Prescriptive Incentive	2009	
2		Custom Incentive	2009		
Hillsdale	Residential	3	Business Education	2009	Overall administration was done by Hillsdale Board of Public Utilities personnel. Contracted with Hillsdale Community Action Agency to implement the Residential Low Income.
		4	Business Pilot/Emerging Technology	2010	
		1	Efficient Lighting	209	
		2	Refrigerator/Freezer Recycling	2009	
	C & I	3	Education Services	2009	
		4	Efficient Appliances & HVAC	2010	
		1	Prescriptive Incentive Program	2009	
		2	Custom Incentive	2009	

Appendix B

Utility	Sector		Program Type	Year Imp.	Implementation Contractors	
Lansing Board Of Water & Light (BWL)	Residential	1	Efficient Lighting	2010	Internally	
		2	Refrigerator/Freezer Recycling	2009	Franklin Energy	
		3	Education Services	2009	Internally	
		4	Residential Appliances and HVAC	2010	Franklin Energy	
		5	Residential Multi-Family In-Unit Efficiency	2010	Franklin Energy	
		6	Residential Low Income	2009	Capital Area Community Services	
		7	Pilot/Emerging Technology	2010	Internally	
	C & I	1	Multi-Family Common Area	2010	Franklin Energy	
		2	Prescriptive Incentive Program	2009	Franklin Energy	
		3	Custom Incentive Program	2009	Franklin Energy	
4		Educational Services	2009	Internally		
5		Pilot/Emerging Technology	2010	Internally		
Marshall	Residential	1	Residential Low Income	2009	Community Action Agency	
		2	Efficient Lighting Program	2009	Internally	
		3	Residential Education	2009	Internally	
	C & I	1	Business Education	2009	Internally	
		2	Prescriptive Incentive Program	2010	Internally	
		3	Custom Incentive Program	2010	Internally	
Sebawaing	Residential	1	Residential Low Income	2009	Internally	
		2	Efficient Lighting Program	2009	Internally	
		3	Refrigerator/Freezer Recycling	2009	Internally	
		4	Educational Services	2009	Internally	
		5	Residential Appliances and HVAC	2010	Internally	
		6	Residential Multi-Family In-Unit Efficiency	2010	Internally	
		7	Residential Pilot/Emerging Technology	2010	Internally	
	C & I	1	Prescriptive Incentive	2009	Internally	
		2	Custom Incentive	2009	Internally	
		3	Business Education	2009	Internally	
Union City	Residential	1	Residential Low Income	2009	Internally	
		2	Efficient Lighting Program	2009	Internally	
		3	Residential Education	2009	Internally	
		4	Refrigerator/Freezer Recycling	2010	Internally	
		5	Efficient Appliances/Electronics	2010	Internally	
		6	Efficient HVAC	2010	Internally	
	C & I	1	Prescriptive Incentive	2009	Internally	
		2	Education Services	2009	Internally	
	Wakefield	Residential	1	Residential Low Income	2010	Internally
			2	Efficient Lighting Program	2010	Internally
3			Refrigerator/Freezer Recycling	2010	Internally	
4			Efficient Appliances/Electronics	2010	Internally	
5			Water Heater Savings Kits	2010	Internally	
6			Educational Services	2010	Internally	
C & I		1	Prescriptive Incentive Program	2010	Internally	
		2	Custom Incentive	2010	Internally	
		3	Education Services	2010	Internally	
Gas						
Consumers (Gas)	(See Consumers Info Above)					
MichCon (Gas)	Residential	1	Energy Star Products	2009	ICF	
		2	Residential HVAC	2009	ICF	
		3	Multifamily	2009	SEEL	
		4	Audit and Weatherization	2009	CLEAResult & SEEL	
		5	New Home Construction	2009	CLEAResult	
		6	Low Income Education	2009	Internally	
		7	Education	2009	Internally	
		8	Pilots	2009	Internally	
	C & I	1	Prescriptive	2009	KEMA	
		2	Custom	2009	KEMA	
3		Education	2009	Internally		
4		Pilots	2009	Internally		
Efficiency United						
IOUs: Alpena Edison Sault NSP(Xcel) UPP Co. Wisconsin PSC Wisconsin Elec. Indiana Michigan Co-Op: Bayfied Muni: Daggett Gas IOUs: MGU NSP (Xcel) Wisconsin PSC Semco	Residential	1	Low Income	2010	MCAAA	
		2	Residential Energy Star Program	2010	CLEAResult	
		3	Appliance Recycling	2010	JACO	
		4	Online/Onsite Audit	2010	Enercom	
		5	HVAC	2010	CLEAResult	
		6	Multi-Family	2010	CLEAResult	
		7	New Construction	2010	CLEAResult	
		8	Education	2010	CLEAResult	
		9	Pilots	2010	CLEAResult	
	C & I	1	Prescriptive	2010	Franklin Energy	
		2	Custom	2010	Franklin Energy	
		3	Education	2010	Franklin Energy	
4		Pilots	2010	Franklin Energy		

Appendix B

Utility	Sector		Program Type	Year Imp.	Implementation Contractors
WPPI COLLABORATIVE (Munis)					
WPPI Municipal Members: Baraga Crystal Falls Gladstone L'Anse Negaunee Norway	Residential & Commercial	1	Home Energy Suite	2010	WPPI
		2	National Theatre for Children	2010	WPPI
		3	The Local Circuit	2010	WPPI
		4	eco@home	2010	WPPI
		5	GreenMax Home Program	2010	WPPI
		6	Renewable Energy Customer Incentives	2010	WPPI
		7	Study Grants	2010	WPPI
	Residential	1	Efficient Lighting Program	2009	WPPI
		2	ENERGY STAR Appliance Rebates	2009	WPPI
		3	Residential Low Income Services	2010	Michigan Energy Options
		4	ENERGY STAR Lighting Incentives	2010	WPPI
		5	Responsible Appliance Recycling Program	2010	WPPI
		6	HVAC Incentives	2010	WPPI
	C & I	1	Commercial and Industrial Custom Incentive	2009	WPPI
		2	Prescriptive Incentives	2010	WPPI
		3	RFP for Wenergy Efficiency	2010	WPPI
		4	Shared Savings Program	2010	WPPI
		5	New Construction Design Assistance	2010	WPPI
MECA					
Co-Ops					
Alger Delta Cloverland Great Lakes Midwest Ontonagon Presque Thumb Homeworks	Residential	1	Residential Energy Efficiency Assistance Program	2009	MCAAA & CLEAResult
		2	Residential Appliance Recycling	2010	CLEAResult
		3	Residential Audit and Weatherization	2009	CLEAResult
		4	Residential Energy Star Appliance	2009	CLEAResult
		5	Residential New Construction	2010	CLEAResult
		6	Residential Multi-Family	2009	CLEAResult
		7	Residential HVAC	2010	CLEAResult
		8	Residential Pilot Programs	2010	CLEAResult
		9	Residential Education	2010	Internally
	C & I	1	C & I Prescriptive	2009	Franklin Energy
		2	C & I Custom	2010	Franklin Energy
		3	C & I RFP	2010	CLEAResult
		4	C & I New Construction	2010	CLEAResult
		5	C & I Pilot	2010	CLEAResult
6		C & I Education	2010	Internally	
Munis					
Escanaba Marquette	Residential	1	Residential Low Income Services	2009	MECA
		2	Efficient Lighting Program	2009	MECA
		3	Refrigerator/Freezer Turn-In	2009	MECA
		4	Residential Education	2009	Internally
		5	Residential Appliances and HVAC	2010	MECA
		6	Residential Multi-Family and In-Unit Efficiency	2010	MECA
		7	Residential Pilot/Emerging Technology	2010	MECA
	C & I	1	Commercial and Industrial Prescriptive	2009	MECA
		2	Commercial and Industrial Custom Incentive	2009	MECA
		3	Business Education	2009	Internally
		4	Business Pilot/Emerging Technology	2010	MECA
		5	Business Multi-Family Common Area Efficiency	2010	MECA
Newberry	Residential	1	Residential Low Income	2009	MECA
		2	Appliance Recycling	2009	MECA
		3	Residential Education Services	2009	Internally
		4	Residential Audit & Weatherization	2009	MECA
		5	Residential Appliances and HVAC	2010	MECA
		6	Residential Multi-Family In-Unit Efficiency	2010	MECA
		7	Residential New Construction	2010	MECA
		8	Residential Pilot Programs	2010	MECA
	C & I	1	Commercial and Industrial Prescriptive Incentive	2009	MECA
		2	Commercial and Industrial Custom Incentive	2009	MECA
		3	Business Education	2009	Internally
		4	Business Pilot Programs	2010	MECA
Stephenson	Residential	1	Appliance Recycling	2009	MECA
		2	Residential Education	2009	Internally
		3	Residential Audit & Weatherization	2010	MECA
		4	Residential Multi-Family In-Unit Efficiency	2010	MECA
		5	Residential New Construction	2010	MECA
		6	Residential Pilot Programs	2010	MECA
	C & I	1	Commercial and Industrial Prescriptive Incentive	2009	MECA
		2	Commercial and Industrial Custom Incentive	2009	MECA
		3	Commercial Pilot Programs	2010	MECA
MPPA Collaborative (Munis)					
Bay City	Residential	1	Residential Low Income	2009	Habitat for Humanity Local Division on Aging Red Cross
		2	Efficient Lighting	2009	Franklin Energy
		3	Refrigerator/Freezer Recycling	2009	Franklin Energy
		4	Residential Education Services	2009	Internally
		5	Residential Appliances and HVAC	2010	Internally
		6	Electric Hot Water Heater Savings Kits	2010	Internally
		7	Pilot Programs	2010	Internally
	C & I	1	Prescriptive Incentive	2009	Franklin Energy
		2	Custom Incentive	2009	Franklin Energy
		3	Education Services	2009	Internally
		4	Pilot Programs	2010	Internally



Appendix B

Utility	Sector		Program Type	Year Imp.	Implementation Contractors
Charlevoix	Residential	1	Residential Low Income	2009	Northwest MCAA
		2	Efficient Lighting Program	2009	Franklin Energy
		3	Refrigerator/Freezer Recycling	2009	Franklin Energy
		4	Residential Appliances and HVAC	2010	Internally
		5	Education	2009	Internally
	C & I	1	Prescriptive	2009	Franklin Energy
		2	Custom	2009	Franklin Energy
		3	Education	2009	Internally
Chelsea	Residential	1	Residential Low Income	2009	Looking for Partners
		2	Efficient Lighting Program	2009	Franklin Energy
		3	Education	2009	Franklin Energy
		4	Residential Appliances and HVAC	2010	Internally
		5	Residential Multi-Family In-Unit Efficiency	2010	Chelsea Internally
		6	Residential Pilot/Emerging Technology	2010	Chelsea Internally
	C & I	1	Prescriptive Incentive	2009	Franklin Energy
		2	Custom Incentive	2009	Franklin Energy
		3	Education	2009	Internally
		4	Multi-Family Common Area	2010	Internally
		5	Business Pilot/Emerging Technology	2010	Internally
Croswell	Residential	1	Residential Low Income	2010	Lion's Club for 2010
		2	Efficient Lighting	2009	Franklin Energy
		3	Refrigerator/Freezer Recycling	2009	Franklin Energy
		4	Education	2009	Internally
		5	Efficient Appliances & HVAC	2010	Internally
	C & I	1	Prescriptive Incentive	2009	Franklin Energy
		2	Custom Incentive	2009	Franklin Energy
		3	Education	2009	Internally
Detroit Public Lighting	Residential	1	Residential Low Income	2010	Internally
		2	Efficient Lighting	2010	Internally
	C & I	1	Prescriptive Incentive	2010	Internally
		2	Custom Incentive	2010	Internally
		3	Education	2010	Internally
Dowagiac	Residential	1	Residential Low Income	2009	Looking for Partners
		2	Efficient Lighting	2009	Franklin Energy
		3	Refrigerator/Freezer Recycling	2009	Franklin Energy
		4	Education	2009	Internally
		5	Residential Appliances and HVAC	2010	Internally
	C & I	1	Business Incentives	2009	Franklin Energy
		2	Education Services	2009	Internally
		3	C & I Incentive Programs	2010	Franklin Energy
Eaton Rapids	Residential	1	Residential Low Income	2009	Looking for Partners
		2	Efficient Lighting	2009	Franklin Energy
		3	Refrigerator/Freezer Recycling	2009	Franklin Energy
		4	Education	2009	Internally
		5	Residential Appliances and HVAC	2010	Internally
		6	Residential Multi-Family In-Unit Efficiency	2010	Internally
	C & I	1	Prescriptive Incentive	2009	Franklin Energy
		2	Custom Incentive	2009	Franklin Energy
		3	Education	2009	Internally
		4	Business Pilot/Emerging Technology	2010	Internally
Grand Haven	Residential				Community Action Agency & The Salvation Army
		1	Residential Low Income	2009	Franklin Energy
		2	Efficient Lighting	2009	Franklin Energy
		3	Refrigerator/Freezer Recycling	2009	Franklin Energy
		4	Education	2009	Internally
		5	Residential Appliances and HVAC	2010	Internally
		6	Residential Multi-Family In-Unit Efficiency	2010	Internally
		7	Residential Pilot/Emerging Technology	2010	Internally
	C & I	1	Prescriptive Incentive	2009	Franklin Energy
		2	Custom Incentive	2009	Franklin Energy
		3	Education	2009	Internally
		4	Business Multi-Family Common Area Efficiency	2010	Internally
		5	Business Pilot/Emerging Technology	2010	Internally
Harbor Springs	Residential	1	Residential Low Income	2010	MCAAA
		2	Efficient Lighting	2009	Franklin Energy
		3	Refrigerator/Freezer Recycling	2009	Franklin Energy
		4	Education	2009	Internally
		5	Residential Appliances and HVAC	2010	Internally
	C & I	1	Prescriptive Incentive	2009	Franklin Energy
		2	Custom Incentive	2009	Franklin Energy
		3	Education	2009	Internally
Hart Hydro	Residential	1	Residential Low Income	2010	Oceana's Home Partnership
		2	Efficient Lighting	2009	Franklin Energy
		3	Refrigerator/Freezer Recycling	2009	Franklin Energy
		4	Residential Appliances and HVAC	2010	Hart Hydro, MPPA & Franklin
	C & I	1	Prescriptive Incentive	2009	Franklin Energy
		2	Custom Incentive	2009	Franklin Energy
		3	Education	2009	Hart Hydro, MPPA & Franklin



Appendix B

Utility	Sector		Program Type	Year Imp.	Implementation Contractors
Holland	Residential	1	Residential Low Income	2009	West Michigan Environmental Action Council & West Michigan Creation Care
		2	Efficient Lighting	2009	Franklin Energy
		3	Refrigerator/Freezer Recycling	2009	Franklin Energy
		4	Education	2009	Internally
		5	Residential Appliances and HVAC	2010	Internally
		6	Residential Multi-Family In-Unit Efficiency	2010	Internally
		7	Residential Pilot/Emerging Technology	2010	Internally
	C & I	1	Prescriptive Incentive	2009	Franklin Energy
		2	Custom Incentive	2009	Franklin Energy
		3	Education	2009	Internally
		4	Business Pilot/Emerging Technology	2010	Internally
Lowell	Residential	1	Residential Low Income	2009	Local Community Action Agencies
		2	Efficient Lighting	2009	Internally
		3	Refrigerator/Freezer Recycling	2009	Franklin Energy
		4	Education	2009	Internally
		5	Residential Appliances and HVAC	2010	Internally
		6	Residential Multi-Family In-Unit Efficiency	2010	Internally
	C & I	1	Prescriptive Incentive	2009	Franklin Energy
		2	Custom Incentive	2009	Franklin Energy
		3	Education	2009	Internally
		4	Business Pilot/Emerging Technology	2009	Internally
Niles	Residential	1	Residential Low Income	2010	Local Community Action Agencies
		2	Efficient Lighting	2009	Franklin Energy
		3	Refrigerator/Freezer Recycling	2009	Franklin Energy
		4	Education	2009	Internally
		5	Residential Appliances and HVAC	2010	Internally
	C & I	1	Prescriptive Incentive	2009	Franklin Energy
		2	Custom Incentive	2009	Franklin Energy
		3	Education	2009	Internally
Paw Paw	Residential	1	Residential Low Income	2009	MCAAA
		2	Efficient Lighting	2009	Franklin Energy
		3	Refrigerator/Freezer Recycling	2009	Franklin Energy
		4	Education	2009	Internally
		5	Residential Appliances and HVAC	2010	Internally
	C & I	1	Prescriptive Incentive	2009	Franklin Energy
		2	Custom Incentive	2009	Franklin Energy
		3	Education	2009	Internally
Petoskey & South Haven	Residential	1	Residential Low Income	2009	Northwest & Southwest Community Action Agency
		2	Efficient Lighting	2009	Franklin Energy
		3	Refrigerator/Freezer Recycling	2009	Franklin Energy
		4	Education	2009	Internally
		5	Residential Appliances and HVAC	2010	Internally
		6	Pilot/Emerging Technology	2010	Internally
	C & I	1	Prescriptive Incentive	2009	Franklin Energy
		2	Custom Incentive	2009	Franklin Energy
		3	Education	2009	Internally
		4	Pilot/Emerging Technology	2010	Internally
Portland	Residential	1	Residential Low Income	2010	Looking for Partners
		2	Efficient Lighting	2009	Franklin Energy
		3	Refrigerator/Freezer Recycling	2009	Franklin Energy
		4	Education	2009	Internally
		5	Residential Appliances and HVAC	2010	Internally
		6	Residential Multi-Family In-Unit Efficiency	2010	Internally
		7	Residential Pilot/Emerging Technology	2010	Internally
	C & I	1	Prescriptive Incentive	2009	Franklin Energy
		2	Custom Incentive	2009	Franklin Energy
		3	Education	2009	Internally
		4	Business Multi-Family Common Area Efficiency	2010	Internally
		5	Business Pilot/Emerging Technology	2010	Internally
St. Louis	Residential	1	Residential Low Income	2009	EightCAP
		2	Efficient Lighting	2009	Franklin Energy
		3	Refrigerator/Freezer Recycling	2009	Franklin Energy
		4	Education	2009	Internally
		5	Residential Appliances and HVAC	2010	Internally
	C & I	1	Prescriptive Incentive	2009	Franklin Energy
		2	Custom Incentive	2009	Franklin Energy
		3	Education	2009	Internally
Sturgis	Residential	1	Residential Low Income	2009	Looking for Partners
		2	Efficient Lighting	2009	Franklin Energy
		3	Refrigerator/Freezer Recycling	2009	Franklin Energy
		4	Education	2009	Internally
		5	Residential Appliances and HVAC	2010	Internally
	C & I	1	Prescriptive Incentive	2009	Franklin Energy
		2	Custom Incentive	2009	Franklin Energy
		3	Education	2009	Internally

Appendix B

Utility	Sector		Program Type	Year Imp.	Implementation Contractors
Traverse City	Residential	1	Residential Low Income	2009	Traverse City Housing Commission
		2	Efficient Lighting	2009	Franklin Energy
		3	Refrigerator/Freezer Recycling	2009	Franklin Energy
		4	Education	2009	Internally
		5	CFL's State Grant	2009	Internally
		6	Residential Appliances and HVAC	2010	Internally
		7	Residential Multi-Family In-Unit Efficiency	2010	Internally
		8	Residential Pilot/Emerging Technology	2010	Internally
	C & I	1	Prescriptive Incentive	2009	Franklin Energy
		2	Custom Incentive	2009	Franklin Energy
3		Education	2009	Internally	
4		Business Multi-Family Common Area Efficiency	2010	Internally	
5		Business Pilot/Emerging Technology	2010	Internally	
Wyandotte	Residential	1	Residential Low Income	2009	Looking for Partners
		2	Efficient Lighting	2009	Franklin Energy
		3	Refrigerator/Freezer Recycling	2009	Franklin Energy
		4	Education	2009	Internally
		5	Residential Appliances and HVAC	2010	Internally
	C & I	1	Prescriptive Incentive	2009	Franklin Energy
		2	Custom Incentive	2009	Franklin Energy
		3	Education	2009	Internally
		4	Lighting Upgrade State Grant	2009	Internally
Zeeland	Residential	1	Residential Low Income	2009	Solid Rock Ministries
		2	Efficient Lighting	2009	Internally
		3	Education	2009	Internally
		4	Residential Appliances and HVAC	2010	Internally
		5	Refrigerator/Freezer Turn in & Recycle	2010	Internally
	C & I	1	Prescriptive Incentive	2009	Internally
		2	Custom Incentive	2009	Internally
		3	Education	2009	Internally
		4	Pilot & Emerging Technology	2009	Internally

## Energy Optimization MWH Targets

2009-2010 Mwh Targets vs. Actuals / 2011 Targets*							
% of MWH Sales		0.30%			0.50%		
		2009 Target	2009 Actual	% Achieved	2010 Target	2010 Actual	2011 Target*
	<b>Electric IOUs</b>						
1	Alpena	973	16	2%	2,586	3,859	2,419
2	Consumers	107,939	145,118	134%	178,509	251,187	262,700
3	Detroit Edison	160,000	203,000	127%	227,153	402,995	339,208
4	Edison Sault	2,014	9	0%	5,364	5,375	5,026
5	Indiana Michigan	9,159	197	2%	24,110	25,157	22,427
6	Northern States Wisc	413	0	0%	1,100	1,407	1,031
7	UP Power	2,509	350	14%	6,750	6,357	6,271
8	Wisconsin Electric	8,414	44	1%	21,614	21,722	19,800
9	WPSCorp	876	2	0%	2,271	2,474	2,093
	<b>Subtotal IOUs</b>	<b>292,297</b>	<b>348,736</b>	<b>119%</b>	<b>469,457</b>	<b>720,533</b>	<b>660,975</b>
	<b>Electric Coops</b>						
10	Alger Delta	303	22	7%	486	606	24,426
12	Cherryland	791	751	95%	1,777	2,037	
13	Cloverland	589	46	8%	1,610	1,500	
14	Great Lakes	4,265	286	7%	10,327	10,282	
15	Midwest	1,618	234	14%	4,390	4,509	
16	Ontonagon	160	5	3%	210	173	
17	Presque Isle	886	34	4%	1,917	2,187	
18	Thumb	529	64	12%	1,714	1,087	
19	Tri-County	1,092	262	24%	2,425	5,002	
11	Bayfield	1	0	0%	2	3	1
	<b>Subtotal Coops</b>	<b>10,234</b>	<b>1,704</b>	<b>17%</b>	<b>24,858</b>	<b>27,386</b>	<b>24,427</b>
	<b>Municipals</b>						
20	Baraga	60	97	162%	84	7	150
21	Crystal Falls	50	718	1436%	60	459	124
22	Escanaba	427	0	0%	1,212	1,171	1,104
23	Gladstone	97	407	420%	182	267	239
24	L'Anse	42	123	293%	79	10	88
25	Marquette	872	0	0%	2,534	3,198	2,435
26	Negaunee	67	274	409%	92	85	144
27	Newberry	17	0	0%	148	124	144
28	Norway	94	120	128%	159	76	240
29	Stephenson	17	0	0%	49	47	45
30	Bay City	896	715	80%	1,473	2,251	2,425
31	Charlevoix	203	79	39%	450	262	482
32	Chelsea	266	409	154%	365	359	722
33	Clinton	146	173	118%	113	113	162
34	Coldwater	865	37	4%	2,342	1,379	2,274
35	Croswell	110	247	225%	133	230	281
36	Detroit PLD	2	2	100%	1,587	224	3,673
37	Dowagiac	239	52	22%	547	521	519
38	Eaton Rapids	154	61	40%	347	298	696
39	Grand Haven	873	921	105%	1,373	1,591	2,092
40	Harbor Springs	112	150	134%	171	167	282
41	Hart	115	101	88%	196	193	278
42	Hillsdale	429	415	97%	726	1,216	1,061
43	Holland	3,089	3,382	109%	4,849	5,481	7,136
44	LBWL	6,831	6,972	102%	11,165	11,524	16,236
45	Lowell	180	289	161%	226	269	478
46	Marshall	357	363	102%	579	835	861
47	Niles	440	234	53%	802	718	1,030
48	Paw Paw	116	109	94%	201	115	287
49	Petoskey	232	880	379%	404	599	836
50	Portland	107	103	96%	182	210	268
51	Sebewaing	125	531	425%	158	995	304
52	South Haven	411	423	103%	688	610	1,048
53	St. Louis	120	77	64%	242	251	294
54	Sturgis	720	797	111%	1,198	1,249	1,753
55	Traverse City	991	1,735	175%	1,149	1,945	2,428
56	Union City	47	53	113%	79	197	118
57	Wakefield	38	0	0%	103	237	99
58	Wyandotte	2,464	3,034	123%	2,388	3,832	2,181
59	Zeeland	1,099	1,122	102%	1,335	2,202	2,022
60	Daggett	5	7	140%	12	19	11
	<b>Subtotal Munis</b>	<b>23,525</b>	<b>25,212</b>	<b>107%</b>	<b>40,182</b>	<b>45,536</b>	<b>57,049</b>
60	<b>Statewide Totals</b>	<b>326,056</b>	<b>375,652</b>	<b>115%</b>	<b>534,497</b>	<b>793,455</b>	<b>742,451</b>

\*2011 target does not including previous year carryover amount.

# MCF Targets for Gas Companies

# Appendix C-2

MCF Target Totals								
% of MCF Sales		0.10%			0.25%			0.50%
		2009 Target	2009 Actual	% Achieved	2010 Target	2010 Actual	% Achieved	2011 Target
1	Consumers	299,623	396,783	132%	743,943	937,915	126%	1,257,275
2	MichCon	164,003	250,680	153%	405,110	792,000	196%	789,450
Efficiency United Gas Companies (Treated 2009 and 2010 as one plan year)								
% of MCF Sales		.10% & .25%			0.50%			
		2009-2010 Target	2009-2010 Actual	% Achieved	2011 Target			
3	MGU	105,323	122,432	116%	150,300			
4	SEMCO Energy	195,859	243,050	124%	280,158			
5	WPSCorp	5,301	5,788	109%	7,515			
6	Northern States Wisc	3,126	9,061	290%	4,481			
6	Total EU Gas	309,609	380,331	123%	442,454			
	Statewide Gas Total	1,922,288	2,757,709	143%	2,489,179			

Appendix D-1

EO Surcharges by Company																			
Electric Coops	Case No.	Plan Approved	Group																
Alger Delta Coop Elec	U-15813	5/12/2009	MECA	Farm and Home (A)	Seasonal Residential (AS)	Combined Residential	Commercial & Small Power (B)	Large Power (LP)											
Rate				0.00218 \$/kwh			\$1.97	\$35.48											
Cherryland Elec Coop	U-15815	5/12/2009	Independent	Farm and Home (A)	Seasonal Residential (A-S)	Combined Residential	General Service (C)	Optional Irrigation TOD (OTD)	Large Power (LP)	Optional Large Power TOD (LPTOD)	Large Commercial & Industrial (LC&I)	Primary Substation (PSDS)							
Rate				0.00143 \$/kwh			\$1.64		\$26.36		\$247.81	\$497.36							
Cloverland Electric Coop.	U-15816	5/12/2009	MECA	Farm and Home (FH) (ES)	Seasonal Residential (SR)	Combined Residential	General Service (GS)	Seasonal General Service (SG)	Commercial Heating and A/C (HA)	Large Power (LP)	Large Power Mining (LP-MO)	Primary Service (PSDS)							
Rate				0.00139 \$/kwh			\$1.53			\$54.92									
Great Lakes Energy Coop	U-15817	5/12/2009	MECA	Residential (A)	Seasonal Residential (AS)	Combined Residential	General Service (GS)	Large Power (LP)	C&I APM (C-APM)	C&I APM (D-APM)	Primary Service (PSDS)								
Rate				0.00158 \$/kwh			\$2.85			\$533.14									
Midwest Energy Coop	U-15818	5/12/2009	MECA	Farm and Home Service (A)	Int Duel Heating (I-DSH)	Combined Residential	General Service (GS)	Irrigation (IRR)	Large Power Service (LP)	>200 kW (CD-1)	Primary & Contracts								
Rate				1.25 \$/kwh	\$0.56	\$1.24	\$1.34	\$3.34	\$31.39	\$196.03	\$1,416.58								
Ontonagon County Rural Elec.	U-15819	5/12/2009	MECA	Residential (A, AH)	Seasonal Residential (A-S)	Combined Residential	General Service (B)	Large Power (LP)	Large Power (LP-1)										
Rate				0.00242 \$/kwh			\$2.26	\$14.93	\$77.70										
Presque Isle Elec & Coop	U-15820	5/12/2009	MECA	Residential (A)	Seasonal Residential (AS)	Combined Residential	General Service (GS)	Large General Service (LG and LPTOD)	Primary Service (PSDS)										
Rate				0.00164 \$/kwh			\$2.68	\$45.73	\$430.87										
Thumb Elec. Coop	U-15821	5/12/2009	MECA	Farm and Home (A)	S)	Combined Residential	(GS)	Service (LGS)	Dist.	Service TOD	General Service								
Rate				0.00133 \$/kwh			\$2.07	\$118.35	\$167.00	\$1.89	\$0.63								
Tri-County Elec. Coop/Homeworks	U-15822	5/12/2009	MECA	Farm and Home Service (A) \$/kwh	General Service	Irrigation TOD Service	Large Power Service (CD)	Large Power TOD Service (CD-1)	Primary Service (PSDS)										
Rate				0.00149 \$/kwh	\$1.29	\$15.67	\$30.21	\$29.43	\$889.24										
Electric IOUs																			
Alpena Power	U-15804	5/12/2009	EU	Residential \$/kwh	General Service	Standard	Large Power	Large Power	Large Industrial below 13 kV	Large Industrial above 13 kV	Alt Energy Econ Dev	Outdoor Protective Lighting 100 watt	Outdoor Protective Lighting 250 watt	Street & Highway	Special Contract				
2010 Rate				\$0.00136	\$1.3835	\$22.3575	\$196.95	\$196.95	same	\$802.68	\$324.92	\$0.144	\$0.2284	\$0.135	\$575.41				
2009 Rate				\$0.0013	\$1.33	\$18.83	\$162.72	\$162.72	\$573.50	\$2,744.32	same	\$0.13	\$0.23	\$0.12	\$3,775.03				
Consumers Energy	U-15805	5/26/2009	Independent	Residential \$/kwh	Secondary 1250 kwh 0-	Secondary 5000 kwh 1251-	Secondary 5001-30000 kwh	Secondary 50000 kwh 30001-	Secondary Above 50000 kwh	Primary 0-5000 kwh	Primary 5001-10000 kwh	Primary 10001-30000 kwh	Primary 30001-50000 kwh	Primary above 50000 kwh					
2010 Rate				\$0.00143	\$0.96	\$5.38	\$32.27	\$32.27	\$32.27	\$2.99	\$22.84	\$57.04	\$113.51	\$629.08					
2009 Rate														\$422.23					
Detroit Edison*	U-15806	6/2/2009	Independent	Residential \$/kwh	Secondary kWh/mo 0 - 850	Secondary 1650 kWh/mo 851-	Sec Above 1650 kWh/mo	Primary 11500 kwh/mo 0 -	Primary Above 11501 kWh/mo										
2010 Rate				\$0.00243	\$0.26	\$1.59	\$6.88	\$19.63	\$203.06										

Appendix D-1

2009 Rate				\$0.00108	\$0.24	\$1.42	\$6.16	\$28.32	\$283.32										
Edison Sault	U-15807	5/12/2009	EU	Residential \$/kwh	Small Commercial	Large Commercial	Industrial	Industrial TOD	Outdoor Lighting	Street Lighting									
Rate				\$0.001168	\$3.40	\$118.65	\$423.16	\$937.02	\$0.11	\$0.12									
Indiana Michigan*	U-15808	5/12/2009	EU	Residential \$/kwh	C&I SGS	C&I SEC MGS TOD	C&I MGS PRI WSS PRI	C&I LGS SEC LGS PRI	C&I MS	C&I WSS SEC	C&I LP PRI SUB	C&I LP Tran	C&I QP PRI	C&I QP SUB					
2010 Rate				\$0.00085	\$2.68	\$2.68	\$2.68	\$154.21	\$2.68	\$2.68	\$154.21	\$154.21	\$154.21	\$154.21					
2009 Rate				\$0.00081	\$2.76	\$2.76	\$2.76	\$157.39	\$2.76	\$2.76	\$157.39	\$157.39	\$157.39	\$157.39					
NSP-Wisc (Elec.)	U-15809	5/12/2009	EU	Residential CO1,2 \$/kwh	Small Commercial C9,10,	Commercial C11 TOD	Commercial C12, 21	Industrial C13,20 sec	Industrial C20 trans	Lighting CO4, 30	Muni Pump Service								
Rate				\$0.0013	\$1.48	\$1.48	\$14.15	\$92.51	\$1,020.87	\$0.13	\$1.48								
Wisc. Elec Power Co*	U-15812	5/26/2009	EU	Residential \$/kwh	Cg1	Cg2	Cg3 & Cg3C	Cg5	Cp1	Cp2, Cp3 & Cp4	Schedule A	Spec Con (CpLC)	Mg1	Unmetered lamps GI1	Unmetered lamps Ms21	Unmetered lamps Ms3	LED1		
2010 Rate				\$0.00134	\$0.10642	\$0.19486	\$2.05980	\$0.16619	\$9.49678	\$41.37339	\$511.14649	\$1,325.02526	\$0.050	\$0.08-0.45	\$0.06-0.45	\$0.06-1.13	\$0.00321		
2009 Rate				\$0.00130	\$0.10113	\$0.18515	\$2.21664	\$0.18413	\$9.56129	\$71.08290	\$502.85126	\$1,055.49909	\$0.03692	.05-.40	.05-.40	.05-.40	n/a		
Wisc. PSC (Elec)	U-15811	5/26/2009	EU	Residential RG1,RG1T,RG2,RG2T \$/kwh	Small Comm CG1MI, CG1TMI, CG2MI, CG2TMI	Small Comm Cg1M seasonal, Cg24m seasonal, Cg-OTOU1M seasonal	Medium Comm Cg3M, Cg4M, Mp1M	Medium Comm Cg3M seasonal, Cg4M seasonal	Large C&I PG3, PG2, NatR, NatF	Lighting, MS3, MS1,GY3,GY1									
Rate				\$0.0013	\$2.13	\$4.26	\$27.58	\$55.16	\$256.05	\$0.14									
Upper Peninsula Power	U-15810	5/26/2009	EU	Residential A1,2,AH1,2 \$/kwh	Small Comm C1,1W, 2,2W,H1,2	Medium Commercial P1,2	Lg Commercial CPI, ERER, SCH A, UGDS, UT1, CPRRMI, RTMPMI, WP1D, WP1T, WP2, WP3	Lighting SL, Z	Special Contract										
Rate				\$0.0021	\$2.47	\$27.67	\$442.82	\$0.18	\$632.32										
Natural Gas IOUs																			
Consumers Energy Gas	U-15889	5/26/2009	Independent	Residential (Ccf)	General Service (0-100,000 Mcf)	General Service (Above 100,000 Mcf)	Transportation (0 - 100,000 Mcf)	Transportation (Above 100,000 Mcf)											
Rate				0.01722 \$/ccf	\$0.1588	\$0.0053	\$0.1588	\$0.0053											
MichCon Gas	U-15890	6/2/2009	Independent	Residential A, AS (Ccf)	Residential 2A,GS1 (Ccf)	Large Volume <100,000 Mcf per Ccf	Large Volume >100,000 per Ccf	School, per Ccf	Small Volume Transport per Ccf	Large, Extra Large Volume Transport per Ccf									
Rate				0.0088 \$/ccf	\$0.0116	\$0.0116	\$0.0007	\$0.0116	\$0.0007	\$0.0007									
MGU*	U-15891	5/26/2009	EU	Residential (Ccf)	Multi-Family	Sm General Service	Lg General Service	Commercial Lighting	Special Contracts	Transportation , TR-1	Transportation, TR-2	Transportation, TR-3							
2010 Rate				0.01544 \$/ccf		\$4.41	\$98.76	\$7.77	\$136.94	\$26.82	\$76.40	\$349.37							

Appendix D-1

2009 Rate				0.0124 \$/ccf		\$3.82	\$77.09	\$4.70	\$111.12	\$18.66	\$50.81	\$114.61
<b>NSP-Wisc</b>	<b>U-15892</b>	<b>5/12/2009</b>	<b>EU</b>	Residential \$/therm	C&I 302 /meter	C&I 303 /meter	C&I 304 /meter	C&I Transportation /meter				
Rate				0.0145 \$/therm	\$5.02	\$86.39	\$468.79	\$5.02				
<b>SEMCO Energy</b>	<b>U-15893</b>	<b>5/26/2009</b>	<b>EU</b>	Residential (Ccf)	GS-1	GS-2	GS-3	TR-1	TR-2	TR-3		
2010 Rate				0.01778 \$/ccf	\$2.41	\$13.26	\$67.23	\$26.84	\$89.70	\$313.58		
2009 Rate				0.0152 \$/ccf	\$2.41	\$13.94	\$66.09	\$30.56	\$93.98	\$197.26		
<b>Wisc. PSC (Gas)</b>	<b>U-15894</b>	<b>5/26/2009</b>	<b>EU</b>	Residential \$/Therm	C&I small	C&I small seasonal	C&I large	Tran medium	Transport Large	Transport Super Large		
2010 Rate				0.0159 \$/ccf	\$2.22	\$4.44	\$25.64	-----	\$12.75	\$311.17		
2009 Rate				0.014 \$/ccf	\$2.14	\$4.28	\$30.09	-----	\$11.45	\$105.33		

All Electric Residential Surcharges are Volumetric and All Other Electric Surcharges are Per Meter.

All Natural Gas Surcharges are Volumetric

Electric Municipals	Case No.	Plan Approval Date	GROUP	EO Surcharge Residential \$/kwh - Assume 500 kwh/mo customer	EO Residential surcharge per \$/kwh
Village of Baraga	U-15848	7/1/2009	WPPI	\$0.7000	0.0014
City of Bay City	U-15849	7/1/2009	MPPA	\$0.4125	0.000825
City of Charlevoix	U-15850	7/1/2009	MPPA	\$0.5750	0.00115
Chelsea Department of Electric and Water	U-15851	7/1/2009	MPPA	\$0.5000	0.001
Village of Clinton	U-15852	7/1/2009	Independent	\$0.6500	0.0013
Coldwater Board of Public Utilities	U-15853	7/1/2009	Independent	\$1.2600	0.00252
Croswell Municipal Light & Power Department	U-15854	7/1/2009	MPPA	\$0.8450	0.00169
City of Crystal Falls	U-15855	7/1/2009	WPPI	\$0.7300	0.00146
Daggett Electric Department	U-15856	10/13/2009	EU	TBD	
Detroit Public Lighting Department	U-15857	7/1/2009	MPPA	\$0.7500	0.0015
City of Dowagiac	U-15858	7/1/2009	MPPA	\$0.5000	0.001
City of Eaton Rapids	U-15859	7/1/2009	MPPA	\$0.4000	0.0008
City of Escanaba	U-15860	7/1/2009	MECA	\$0.6850	0.00137
City of Gladstone	U-15861	7/1/2009	WPPI	\$0.8000	0.0016
Grand Haven Board of Light and Power	U-15862	7/1/2009	MPPA	\$0.6900	0.00138
City of Harbor Springs	U-15863	7/1/2009	MPPA	\$0.4300	0.00086
City of Hart Hydro	U-15864	7/1/2009	MPPA	\$0.6500	0.0013
Hillsdale Board of Public Utilities	U-15865	7/1/2009	Independent	\$0.8200	0.00164
Holland Board of Public Works	U-15866	7/1/2009	MPPA	\$0.6865	0.001373
Village of L'Anse	U-15867	7/1/2009	WPPI	\$0.7900	0.00158
Lansing Board of Water & Light	U-15868	7/1/2009	Independent	\$0.7390	0.001478
Lowell Light and Power	U-15869	7/1/2009	MPPA	\$0.4020	0.000804
Marquette Board of Light and Power	U-15870	7/1/2009	MECA	\$0.5450	0.00109
Marshall Electric Department	U-15871	7/1/2009	Independent	\$0.1285	0.000257
Negaunee Department of Public Works	U-15872	7/1/2009	WPPI	\$0.8200	0.00164
Newberry Water and Light Board	U-15873	7/1/2009	MECA	\$0.6850	0.00137
Niles Utility Department	U-15874	7/1/2009	MPPA	\$0.5350	0.00107
City of Norway	U-15875	7/1/2009	WPPI	\$0.8200	0.00164
City of Paw Paw	U-15876	7/1/2009	MPPA	\$0.5995	0.001199
City of Petoskey	U-15877	7/1/2009	MPPA	\$0.9107	0.0018214
City of Portland	U-15878	7/1/2009	MPPA	\$0.6600	0.00132
City of Sebewaing	U-15879	7/1/2009	Independent	\$0.8700	0.00174
City of South Haven	U-15880	7/1/2009	MPPA	\$0.3800	0.00076
City of St. Louis	U-15881	7/1/2009	MPPA	\$0.3250	0.00065
City of Stephenson	U-15882	7/1/2009	MPPA	\$0.6400	0.00128
City of Sturgis	U-15883	7/1/2009	MPPA	\$0.5600	0.00112
Traverse City Light & Power	U-15884	7/1/2009	MPPA	\$0.5650	0.00113
Union City Electric Department	U-15885	7/1/2009	Independent	\$0.4475	0.000895
City of Wakefield	U-15886	7/1/2009	Independent	\$0.2500	0.0005
Wyandotte Department of Municipal Service	U-15887	7/1/2009	MPPA	\$0.7405	0.001481

Appendix D-2

Residential EO Surcharges & Average Monthly Total			
Electric Municipals	Case No.	EO Surcharge \$/mo. Residential - Assume 500 kwh/mo customer	EO Residential surcharge per \$/kwh
Baraga	U-15848	\$0.7000	0.0014
Bay City	U-15849	\$0.4125	0.000825
Charlevoix	U-15850	\$0.5750	0.00115
Chelsea	U-15851	\$0.5000	0.001
Clinton	U-15852	\$0.6500	0.0013
Coldwater	U-15853	\$1.2600	0.00252
Croswell	U-15854	\$0.8450	0.00169
Crystal Falls	U-15855	\$0.7300	0.00146
Daggett	U-15856	TBD	
Detroit Public Lighting	U-15857	\$0.7500	0.0015
Dowagiac	U-15858	\$0.5000	0.001
Eaton Rapids	U-15859	\$0.4000	0.0008
Escanaba	U-15860	\$0.6850	0.00137
Gladstone	U-15861	\$0.8000	0.0016
Grand Haven	U-15862	\$0.6900	0.00138
Harbor Springs	U-15863	\$0.4300	0.00086
City of Hart Hydro	U-15864	\$0.6500	0.0013
Hillsdale	U-15865	\$0.8200	0.00164
Holland	U-15866	\$0.6865	0.001373
Village of L'Anse	U-15867	\$0.7900	0.00158
LBWL	U-15868	\$0.7390	0.001478
Lowell	U-15869	\$0.4020	0.000804
Marquette	U-15870	\$0.5450	0.00109
Marshall	U-15871	\$0.1285	0.000257
Negaunee	U-15872	\$0.8200	0.00164
Newberry	U-15873	\$0.6850	0.00137
Niles	U-15874	\$0.5350	0.00107
Norway	U-15875	\$0.8200	0.00164
Paw Paw	U-15876	\$0.5995	0.001199
Petoskey	U-15877	\$0.9107	0.0018214
Portland	U-15878	\$0.6600	0.00132
Sebewaing	U-15879	\$0.8700	0.00174
South Haven	U-15880	\$0.3800	0.00076
St. Louis	U-15881	\$0.3250	0.00065
Stephenson	U-15882	\$0.6400	0.00128
Sturgis	U-15883	\$0.5600	0.00112
Traverse City	U-15884	\$0.5650	0.00113
Union City	U-15885	\$0.4475	0.000895
Wakefield	U-15886	\$0.2500	0.0005
Wyandotte	U-15887	\$0.7405	0.001481
Zeeland	U-15888	0.35/meter	
2010 Muni Average:		\$0.6281	\$0.0013
2009 Muni Average:		\$0.6281	\$0.0013
Electric Coops	Case No.	EO Surcharge \$/mo Residential Assume 500 kwh/mo customer	EO Residential surcharge per \$/kwh
Alger Delta	U-15813	\$1.09	0.00218
Cherryland	U-15815	\$0.72	0.00143
Cloverland	U-15816	\$0.70	0.00139
Great Lakes	U-15817	\$0.79	0.00158
Midwest	U-15818	\$0.62	0.00124
Ontonagon	U-15819	\$1.21	0.00242
Presque Isle	U-15820	\$0.82	0.00164
Thumb Elec.	U-15821	\$0.67	0.00133
Tri-County	U-15822	\$0.75	0.00149
Bayfield	U-15814		
2010 Co-Op Average:		\$0.82	0.001633333
2009 Co-Op Average:		\$0.82	0.001633333
Electric IOUs	Case No.	EO Surcharge \$/mo Residential Assume 500 kwh/mo customer	EO Residential surcharge per \$/kwh
Alpena Power*	U-15804	\$0.68	0.00136
Consumers Energy*	U-15805	\$0.72	0.00143
Detroit Edison*	U-15806	\$1.22	0.00243
Edison Sault	U-15807	\$0.58	0.00117
Indiana Michigan*	U-15808	\$0.43	0.00085
NSP-Wisc (Elec.)	U-15809	\$0.65	0.00130
Wisc. Elec Power Co*	U-15812	\$0.67	0.00134
Wisc. PSC (Elec)	U-15811	\$0.65	0.00130
Upper Peninsula Power	U-15810	\$1.05	0.00210
2010 Electric IOU Average:		\$0.74	0.001475778
2009 Electric IOU Average:		\$0.65	0.001633333
Natural Gas IOUs	Case No.	EO Surcharge \$/mo Residential - Assume 100 CCf/mo customer	EO Residential surcharge \$/ccf
Consumers Energy Gas	U-15889	\$1.72	0.01722
MichCon Gas	U-15890	\$0.88	0.0088
MGU*	U-15891	\$1.54	0.01544
NSP-Wisc	U-15892	\$1.45	0.0145
SEMCO Energy*	U-15893	\$1.78	0.01778
Wisc. PSC (Gas)*	U-15894	\$1.59	0.01590
2010 Gas IOU Average:		\$1.49	0.01494
2009 Gas IOU Average:		\$1.37	0.013685
2010 STATE OVERALL AVERAGE:		\$0.75	0.0048
2009 STATE OVERALL AVERAGE:		\$0.73	0.0045



Energy Optimization Program Spending

Appendix D-3

Planned Spending	Total				Residential				Residential				C&I				Low Income				
% of Retail Revenues	0.75%	1.0%	1.5%		(Without Low Income)				(Including Low Income)												
	2009	2010	2011	2009-2011	2009	2010	2011	2009-2011	2009	2010	2011	2009-2011	2009	2010	2011	2009-2011	2009	2010	2011	2009-2011	
Electric IOUs																					
1 Alpena	\$0	\$356,573	\$354,942	\$711,515	\$0	\$146,603	\$88,736	\$235,339	\$0	\$178,879	\$124,230	\$303,109	\$0	\$177,694	\$230,712	\$408,406	\$0	\$32,275	\$35,494	\$67,769	
2 Consumers	\$22,157,415	\$33,844,872	\$48,762,019	\$104,764,306	\$4,970,873	\$8,585,903	\$18,539,189	\$32,095,965	\$6,628,035	\$10,797,843	\$20,588,976	\$38,014,854	\$10,578,962	\$18,135,117	\$28,173,044	\$56,887,123	\$1,657,162	\$2,211,940	\$2,049,787	\$5,918,889	
3 Detroit Edison	\$20,059,000	\$41,200,000	\$58,138,000	\$119,397,000	\$8,208,449	\$19,400,000	\$16,556,570	\$44,165,019	\$10,352,449	\$21,900,000	\$22,673,820	\$54,926,269	\$9,706,412	\$19,400,000	\$35,464,180	\$64,570,592	\$2,144,000	\$2,500,000	\$6,117,250	\$10,761,250	
4 Edison Sault	\$0	\$454,949	\$605,075	\$1,060,024	\$0	\$212,924	\$163,370	\$376,294	\$0	\$242,223	\$223,878	\$466,101	\$0	\$212,727	\$381,197	\$593,924	\$0	\$29,298	\$60,508	\$89,806	
5 Indiana Michigan	\$0	\$2,725,835	\$2,706,738	\$5,432,573	\$0	\$1,115,106	\$866,156	\$1,981,262	\$0	\$1,300,295	\$1,136,830	\$2,437,125	\$0	\$1,425,540	\$1,569,908	\$2,995,448	\$0	\$185,188	\$270,674	\$455,862	
6 NSP	\$0	\$138,361	\$177,509	\$315,870	\$0	\$56,037	\$60,353	\$116,390	\$0	\$73,790	\$78,104	\$151,894	\$0	\$64,570	\$99,405	\$163,975	\$0	\$17,754	\$17,751	\$35,505	
7 UP Power	\$0	\$1,121,989	\$1,433,567	\$2,555,556	\$0	\$453,583	\$458,741	\$912,324	\$0	\$574,794	\$602,098	\$1,176,892	\$0	\$547,195	\$831,469	\$1,378,664	\$0	\$121,212	\$143,357	\$264,569	
8 Wisconsin Electric	\$0	\$421,612	\$562,277	\$983,889	\$0	\$171,609	\$241,779	\$413,388	\$0	\$214,952	\$298,007	\$512,959	\$0	\$206,660	\$264,270	\$470,930	\$0	\$43,343	\$56,228	\$99,571	
9 WPSCorp	\$0	\$263,707	\$289,914	\$553,621	\$0	\$100,785	\$60,882	\$161,667	\$0	\$115,517	\$89,873	\$205,390	\$0	\$148,191	\$200,041	\$348,232	\$0	\$14,732	\$28,991	\$43,723	
Subtotal Electric IOUs	\$42,216,415	\$80,527,898	\$113,030,041	\$235,774,354	\$13,179,322	\$30,242,550	\$37,035,776	\$80,457,648	\$16,980,484	\$35,398,293	\$45,815,816	\$98,194,593	\$20,285,374	\$40,317,694	\$67,214,226	\$127,817,294	\$3,801,162	\$5,155,742	\$8,780,039	\$17,736,943	
Electric Coops																					
10 Alger Delta	\$0	\$107,793	\$146,512	\$254,305	\$0	\$73,100	\$74,721	\$147,821	\$0	\$86,839	\$89,372	\$176,211	\$0	\$20,566	\$57,140	\$77,706	\$0	\$13,739	\$14,651	\$28,390	
11 Bayfield	\$0	\$375	\$668	\$1,043	\$0	\$355	\$601	\$956	\$0	\$375	\$668	\$1,043	\$0	\$0	\$0	\$0	\$0	\$20	\$67	\$87	
12 Cherryland	\$0	\$223,854	\$544,183	\$768,037	\$0	\$53,139	\$277,534	\$330,673	\$0	\$102,193	\$331,952	\$434,145	\$0	\$61,806	\$212,232	\$274,038	\$0	\$49,054	\$54,418	\$103,472	
13 Cloverland	\$0	\$267,553	\$292,339	\$559,892	\$0	\$153,033	\$149,093	\$302,126	\$0	\$180,261	\$178,327	\$358,588	\$0	\$70,954	\$114,012	\$184,966	\$0	\$27,228	\$29,234	\$56,462	
14 Great Lakes	\$0	\$1,538,588	\$2,079,054	\$3,617,642	\$0	\$740,970	\$1,060,318	\$1,801,288	\$0	\$859,131	\$1,268,223	\$2,127,354	\$0	\$150,434	\$810,831	\$961,265	\$0	\$118,161	\$207,905	\$326,066	
15 Midwest	\$0	\$651,987	\$787,829	\$1,439,816	\$0	\$358,932	\$401,793	\$760,725	\$0	\$412,032	\$480,576	\$892,608	\$0	\$221,907	\$307,253	\$529,160	\$0	\$53,100	\$78,783	\$131,883	
16 Ontonagon	\$0	\$69,616	\$70,530	\$140,146	\$0	\$45,933	\$35,971	\$81,904	\$0	\$54,033	\$43,024	\$97,057	\$0	\$780	\$27,507	\$28,287	\$0	\$8,100	\$7,053	\$15,153	
17 Presque Isle	\$0	\$376,213	\$415,158	\$791,371	\$0	\$218,668	\$211,731	\$430,399	\$0	\$270,900	\$253,247	\$524,147	\$0	\$15,911	\$161,912	\$177,823	\$0	\$52,232	\$41,516	\$93,748	
18 Thumb	\$0	\$205,494	\$226,649	\$432,143	\$0	\$137,070	\$115,591	\$252,661	\$0	\$169,421	\$138,256	\$307,677	\$0	\$36,073	\$88,393	\$124,466	\$0	\$32,351	\$22,665	\$55,016	
19 Tri-County	\$0	\$494,117	\$520,077	\$1,014,194	\$0	\$280,685	\$265,239	\$545,924	\$0	\$339,444	\$317,247	\$656,691	\$0	\$147,034	\$202,830	\$349,864	\$0	\$58,759	\$52,008	\$110,767	
Subtotal Electric Coops	\$0	\$3,935,590	\$5,083,001	\$9,018,591	\$0	\$2,061,885	\$2,592,591	\$4,654,476	\$0	\$2,474,629	\$3,100,891	\$5,575,520	\$0	\$725,465	\$1,982,110	\$2,707,575	\$0	\$412,744	\$508,300	\$921,044	
Municipals																					
20 Baraga	\$15,818	\$1,546	\$71,241	\$88,605		\$1,546	\$13,594	\$15,140	\$0	\$1,546	\$17,004	\$18,550	0	\$0	\$36,488	\$36,488	\$0	\$0	\$3,410	\$3,410	
21 Crystal Falls	\$12,578	\$31,780	\$26,125	\$70,483		\$6,835	\$14,118	\$20,953		\$8,474	\$16,652	\$25,126		\$23,307	\$8,690	\$31,997		\$1,639	\$2,534	\$4,173	
22 Gladstone	\$25,230	\$20,279	\$60,613	\$106,122		\$11,071	\$37,781	\$48,852		\$11,071	\$43,660	\$54,731		\$9,159	\$15,134	\$24,293		\$0	\$5,879	\$5,879	
23 L'Anse	\$11,198	\$2,197	\$24,266	\$37,661		\$2,197	\$9,914	\$12,111		\$2,197	\$12,268	\$14,465		\$0	\$11,270	\$11,270		\$0	\$2,354	\$2,354	
24 Negaunee	\$20,880	\$16,452	\$56,445	\$93,777		\$10,068	\$38,386	\$48,454		\$13,243	\$43,861	\$57,104		\$2,670	\$10,890	\$13,560		\$3,175	\$5,475	\$8,650	
25 Norway	\$23,828	\$18,523	\$55,828	\$98,179		\$15,272	\$34,604	\$49,876		\$18,523	\$40,019	\$58,542		\$0	\$14,134	\$14,134		\$3,251	\$5,415	\$8,666	
26 Escanaba	\$0	\$141,956	\$211,340	\$353,296	\$0	\$31,038			\$0	\$40,857			\$0	\$91,226			\$0	\$9,819			
27 Marquette	\$0	\$318,944	\$382,153	\$701,097	\$0	\$113,246			\$0	\$137,407			\$0	\$164,087			\$0	\$24,161			
28 Newberry	\$0	\$14,870	\$28,462	\$43,332	\$0	\$4,959	\$99,499	\$251,171		\$0	\$5,873	\$228,324	\$415,580	\$0	\$7,559	\$360,236	\$626,079		\$914	\$21,643	\$57,227
29 Stephenson	\$0	\$6,427	\$10,040	\$16,467	\$0	\$2,429			\$0	\$3,119			\$0	\$2,971			\$0	\$690			
30 Bay City	\$87,758	\$279,321	\$437,876	\$804,955	\$44,321	\$84,922	\$156,177	\$285,420	\$51,624	\$143,708	\$221,802	\$417,134	\$30,384	\$110,577	\$176,699	\$317,660	\$7,303	\$58,786	\$65,625	\$131,714	
31 Charlevoix	\$22,828	\$38,078	\$78,841	\$139,747	\$6,703	\$13,796	\$21,206	\$41,705	\$7,520	\$15,349	\$25,946	\$48,815	\$12,518	\$17,977	\$45,785	\$76,280	\$1,553	\$3,090	\$4,740	\$9,383	
32 Chelsea	\$36,041	\$61,111	\$118,653	\$215,805	\$8,204	\$12,163	\$21,606	\$41,973	\$8,204	\$12,163	\$27,531	\$47,898	\$24,237	\$44,861	\$80,457	\$149,555	\$0	\$0	\$5,925	\$5,925	
33 Clinton	\$4,984	\$2,852	\$27,049	\$34,885	\$2,492	\$2,312	\$10,830	\$15,634	\$2,609	\$2,312	\$12,180	\$17,101	\$445	\$540	\$12,439	\$13,424	\$117	\$0	\$1,350	\$1,467	
34 Coldwater	\$3,780	\$142,182	\$376,245	\$522,207	\$1,780	\$26,016	\$58,875	\$86,671	\$1,780	\$29,328	\$88,955	\$120,063	\$0	\$105,438	\$253,450	\$358,888	\$0	\$3,312	\$30,080	\$33,392	
35 Crosswell	\$13,983	\$26,790	\$46,656	\$87,429	\$3,795	\$5,245	\$7,836	\$16,876	\$3,795	\$7,990	\$12,486	\$24,271	\$11,094	\$7,635	\$29,985	\$48,714	\$0	\$2,390	\$4,650	\$7,040	
36 Detroit PLD	\$19,583	\$142,814	\$557,496	\$719,893		\$6,182	\$300	\$6,482		\$6,402	\$858	\$7,260		\$23,785	\$506,463	\$530,248		\$220	\$558	\$778	
37 Dowagiac	\$21,108	\$58,999	\$85,062	\$165,169	\$7,815	\$10,364	\$17,141	\$35,320	\$7,815	\$10,788	\$21,391	\$39,994	\$9,963	\$44,151	\$56,021	\$110,135	\$0	\$424	\$4,250	\$4,674	
38 Eaton Rapids	\$23,384	\$27,379	\$60,849	\$111,612	\$8,730	\$10,402	\$18,217	\$37,349	\$8,730	\$12,474	\$23,097	\$44,301	\$12,536	\$11,532	\$32,262	\$56,330	\$0	\$2,072	\$4,880	\$6,952	
39 Grand Haven	\$125,173	\$204,772	\$331,878	\$661,823	\$38,728	\$61,399	\$107,646	\$207,773	\$38,728	\$64,279	\$117,606	\$220,613	\$74,925	\$129,855	\$184,393	\$389,173	\$0	\$2,880	\$9,960	\$12,840	
40 Harbor Springs	\$18,263	\$22,647	\$45,255	\$86,165	\$6,884	\$11,565	\$17,336	\$35,785	\$6,884	\$11,786	\$17,796	\$36,4,									

Commission Selected Administrator

Appendix E-1

Efficiency United

Funding and Energy Savings Targets 2009-2011

Payments to Efficiency United		0.75%	1.0%	1.5%	
		2009	2010	2011	2009-2011
1	Alpena**	\$200,594	\$228,990	\$354,942	\$784,526
2	Bayfield (coop)	\$240	\$336	\$668	\$1,244
3	Daggett (muni)	\$870	\$1,160	\$1,764	\$3,794
4	Edison Sault **	\$279,998	\$378,335	\$605,075	\$1,263,407
5	Indiana Michigan	\$1,442,706	\$1,859,141	\$2,706,738	\$6,008,585
6	Northern States Xcel	\$89,002	\$115,837	\$177,509	\$382,348
7	UP Power	\$719,362	\$971,884	\$1,433,567	\$3,124,813
8	Wisconsin Electric **	\$264,328	\$321,835	\$562,277	\$1,148,440
9	WPSCorp	\$139,495	\$215,224	\$289,914	\$644,632
10	MGU (Gas)	\$1,532,721	\$2,427,332	\$2,983,018	\$6,943,071
11	SEMCO Energy (Gas)	\$3,218,624	\$4,798,745	\$5,842,220	\$13,859,589
12	WPSCorp (Gas)	\$49,087	\$72,674	\$93,687	\$215,448
13	Northern States Xcel (Gas)	\$60,440	\$100,711	\$128,215	\$289,365
13	Total	\$7,997,466	\$11,492,203	\$15,179,594	\$34,669,263
Incremental Energy Savings Targets MWh - Electric Utilities		0.30%	0.50%	0.75%	
		2008-2009	2010	2011	2009-2011
1	Alpena***	973	1,613	2,419	5,005
2	Bayfield (coop)	1	1	1	3
3	Daggett (muni)	5	8	11	23
4	Edison Sault ***	2,014	3,350	5,026	10,389
5	Indiana Michigan	9,159	14,952	22,427	46,538
6	Northern States Xcel	413	687	1,031	2,131
7	UP Power	2,509	4,242	6,363	13,113
8	Wisconsin Electric ***	8,414	13,200	19,800	41,414
9	WPSCorp	876	1,395	2,093	4,364
9	Total	24,362	39,447	59,171	122,981
Incremental Energy Savings Targets Mcf - Gas Utilities		0.10%	0.25%	0.50%	
		2008-2009	2010	2011	2009-2011
1	MGU	30,172	75,150	150,300	255,623
2	SEMCO Energy	55,781	140,079	280,158	476,018
3	WPSCorp *	1,544	3,758	7,515	12,817
4	Northern States Xcel *	885	2,241	4,481	7,607
4	Total	88,382	221,227	442,455	752,064
<b>KEY</b>					
* Converted from therms assuming 10 Th = 1 Mcf					
** Self-direct deducted					
*** Includes self-direct goal					

\*2013 payments and targets are estimates

## Appendix E-2

Minimum Payments to Efficiency United			
% of Revenue	2.0%	2.0%	
Year	2012	2013	2012 + 2013
Alpena*	\$510,504	\$516,551	\$1,027,055
Baraga	\$48,700	\$48,700	\$97,400
Bayfield	\$866	\$880	\$1,746
Crystal Falls	\$43,440	\$43,440	\$86,880
Daggett	\$2,469	\$2,469	\$4,937
Gladstone	\$79,460	\$79,460	\$158,920
Hillsdale	\$214,108	\$209,746	\$423,853
Indiana Michigan	\$4,420,319	\$5,030,300	\$9,450,619
L'Anse	\$31,114	\$31,114	\$62,228
Negaunee	\$65,940	\$65,940	\$131,880
Northern States Xcel	\$234,474	\$234,474	\$468,949
Norway	\$72,560	\$72,560	\$145,120
South Haven	\$260,203	\$261,504	\$521,706
UP Power	\$1,967,085	\$2,158,026	\$4,125,111
Wisconsin Electric*	\$931,154	\$931,154	\$1,862,307
WPSCorp	\$381,401	\$412,024	\$793,425
MGU (Gas)	\$3,671,084	\$3,470,800	\$7,141,884
SEMCO Energy (Gas)	\$6,242,032	\$6,271,426	\$12,513,459
WPSCorp (Gas)	\$91,685	\$104,079	\$195,764
Northern States Xcel (Gas)	\$109,531	\$109,531	\$219,063
<b>Total</b>	<b>\$19,378,129</b>	<b>\$20,054,177</b>	<b>\$39,432,306</b>

\*Self-direct deducted in appropriate years

Incremental Energy Savings Targets MWh - Electric Utilities			
% of Sales	1.0%	1.0%	
Year	2012	2013	2012 + 2013
Alpena°	3,244	3,241	6,485
Baraga	188	184	372
Bayfield	1.9	2	4
Crystal Falls	164	162	326
Daggett	15	14	29
Gladstone	328	321	649
Hillsdale	1,275	1,208	2,484
Indiana Michigan	29,403	29,333	58,737
L'Anse	137	135	272
Negaunee	217	219	436
Northern States Xcel	1,378	1,385	2,763
Norway	300	294	594
South Haven	1,312	1,330	2,642
UP Power	8,272	8,145	16,418
Wisconsin Electric°	26,358	26,369	52,727
WPSCorp	2,739	2,691	5,430
<b>Total</b>	<b>75,334</b>	<b>75,032</b>	<b>150,366</b>

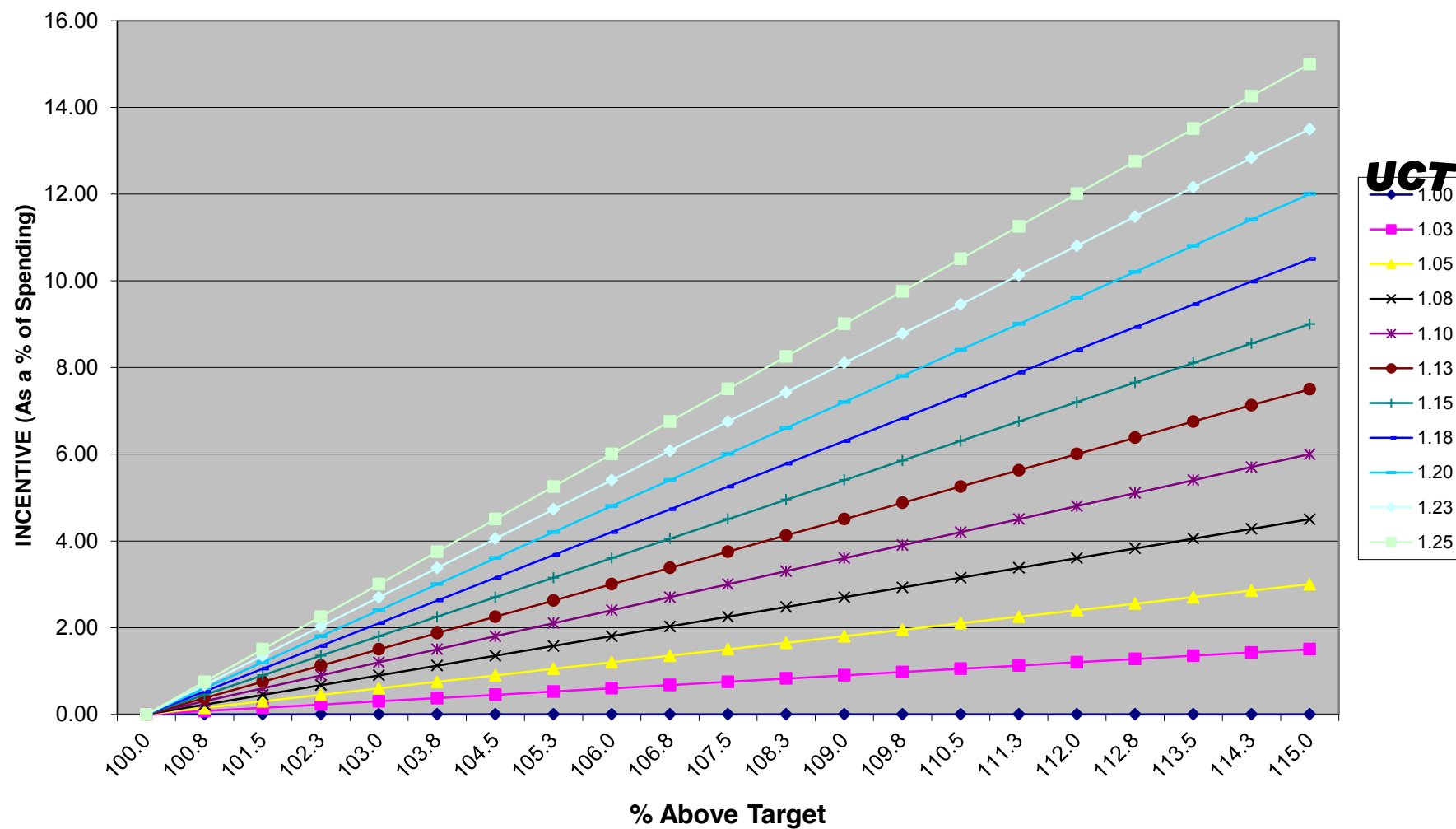
°Includes self-direct goal in appropriate years

Incremental Energy Savings Targets Mcf - Gas Utilities			
% of Sales	0.75%	0.75%	
Year	2012	2013	2012 + 2013
MGU	219,898	212,422	432,320
SEMCO Energy	409,480	397,259	806,739
WPSCorp **	10,946	10,367	21,314
Northern States Xcel **	6,500	6,098	12,599
<b>Total</b>	<b>646,824</b>	<b>626,146</b>	<b>1,272,971</b>

\*\* Converted from therms assuming 10 Th = 1 Mcf

## Efficiency United Funding and Energy Savings Targets 2012-13

### Energy Optimization Program Incentive Mechanism



## EO as a Percent of Program Spending

	UCT										
Target	1.00	1.03	1.05	1.08	1.10	1.13	1.15	1.18	1.20	1.23	1.25
100.0	0.00	0.00	0.00	0.00	0.00	0.00	0.00	0.00	0.00	0.00	0.00
100.8	0.00	0.08	0.15	0.23	0.30	0.38	0.45	0.53	0.60	0.68	0.75
101.5	0.00	0.15	0.30	0.45	0.60	0.75	0.90	1.05	1.20	1.35	1.50
102.3	0.00	0.23	0.45	0.68	0.90	1.13	1.35	1.58	1.80	2.03	2.25
103.0	0.00	0.30	0.60	0.90	1.20	1.50	1.80	2.10	2.40	2.70	3.00
103.8	0.00	0.38	0.75	1.13	1.50	1.88	2.25	2.63	3.00	3.38	3.75
104.5	0.00	0.45	0.90	1.35	1.80	2.25	2.70	3.15	3.60	4.05	4.50
105.3	0.00	0.53	1.05	1.58	2.10	2.63	3.15	3.68	4.20	4.73	5.25
106.0	0.00	0.60	1.20	1.80	2.40	3.00	3.60	4.20	4.80	5.40	6.00
106.8	0.00	0.68	1.35	2.03	2.70	3.38	4.05	4.73	5.40	6.08	6.75
107.5	0.00	0.75	1.50	2.25	3.00	3.75	4.50	5.25	6.00	6.75	7.51
108.3	0.00	0.83	1.65	2.48	3.30	4.13	4.95	5.78	6.60	7.43	8.26
109.0	0.00	0.90	1.80	2.70	3.60	4.50	5.40	6.30	7.20	8.11	9.01
109.8	0.00	0.98	1.95	2.93	3.90	4.88	5.85	6.83	7.81	8.78	9.76
110.5	0.00	1.05	2.10	3.15	4.20	5.25	6.30	7.35	8.41	9.46	10.51
111.3	0.00	1.13	2.25	3.38	4.50	5.63	6.75	7.88	9.01	10.13	11.26
112.0	0.00	1.20	2.40	3.60	4.80	6.00	7.20	8.41	9.61	10.81	12.01
112.8	0.00	1.28	2.55	3.83	5.10	6.38	7.66	8.93	10.21	11.48	12.76
113.5	0.00	1.35	2.70	4.05	5.40	6.75	8.11	9.46	10.81	12.16	13.51
114.3	0.00	1.43	2.85	4.28	5.70	7.13	8.56	9.98	11.41	12.83	14.26
115.0	0.00	1.50	3.00	4.50	6.00	7.50	9.00	10.50	12.00	13.50	15.00

FOR MORE INFORMATION ON THE FINANCIAL INCENTIVE MECHANISM:

- Detroit Edison (U-15806):  
<http://efile.mpsc.state.mi.us/efile/viewcase.php?casenum=15806>
- Michigan Consolidated Gas Company (U-15890):  
<http://efile.mpsc.state.mi.us/efile/viewcase.php?casenum=15890>
- Consumers Energy: (U-15805/U-15889):  
<http://efile.mpsc.state.mi.us/efile/viewcase.php?casenum=15805>
- Detroit Edison (U-16358):  
<http://efile.mpsc.state.mi.us/efile/viewcase.php?casenum=16358>
- Detroit Edison (U-16359):  
<http://efile.mpsc.state.mi.us/efile/viewcase.php?casenum=16359>
- Michigan Consolidated Gas (U-16289):  
<http://efile.mpsc.state.mi.us/efile/viewcase.php?casenum=16289>
- Michigan Consolidated Gas (16290):  
<http://efile.mpsc.state.mi.us/efile/viewcase.php?casenum=16290>
- Consumers Energy (U-16302):  
<http://efile.mpsc.state.mi.us/efile/viewcase.php?casenum=16302>
- Consumers Energy (U-16303):  
<http://efile.mpsc.state.mi.us/efile/viewcase.php?casenum=16303>

Michigan Public Service Commission  
Energy Optimization Collaborative Workgroup Structure

